

Sall4 Rabbit mAb (AR1380)

Key Features

Host Species:	Rabbit
Reactivity:	Human
Applications:	WB,IF,IP,ELISA
Isotype:	IgG,Kappa
MW:	112kD (Calculated) 165kD (Observed)

Recommended Dilution Ratios

WB:	1:2000-10000
IF:	1:200-1000
ELISA:	1:5000-20000
IP:	1:50-200

Storage

-15°C to -25°C/1 year (Do not lower than -25°C)

Basic Information

Clonality	Monoclonal
-----------	------------

Immunogen Information

Specificity	Endogenous
-------------	------------

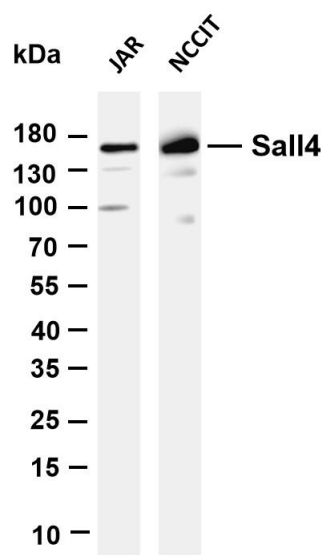
Target Information

Gene name	SALL4 ZNF797
Protein Name	SALL4

Organism	Gene ID	UniProt ID
Human	57167	Q9UJQ4

Cellular Localization	Nucleus
Tissue specificity	Expressed in testis. Constitutively expressed in acute myeloid leukemia (AML).

Validation Data



Various whole cell lysates were separated by 4-20% SDS-PAGE, and the membrane was blotted with anti-Sall4 antibody. The HRP-conjugated Goat anti-Rabbit IgG(H + L) antibody was used to detect the antibody.

Lane 1: JAR

Lane 2: NCCIT

Predicted band size: 112kDa

Observed band size: 165kDa

For Research Use Only