

SIX2 Rabbit mAb (AR1383)

Key Features

Host Species:	Rabbit
Reactivity:	Human, Mouse, Rat
Applications:	WB, IF, IP, ELISA
Isotype:	IgG, Kappa
MW:	32kD (Calculated) 38kD (Observed)

Recommended Dilution Ratios

WB:	1:2000-10000
IF:	1:200-1000
ELISA:	1:5000-20000
IP:	1:50-200

Storage

-15°C to -25°C/1 year (Do not lower than -25°C)

Basic Information

Clonality	Monoclonal
-----------	------------

Immunogen Information

Specificity	Endogenous
-------------	------------

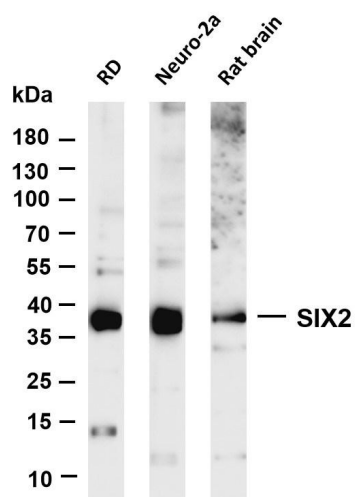
Target Information

Gene name	SIX2
Protein Name	Homeobox protein SIX2

Organism	Gene ID	UniProt ID
Human	10736	Q9NPC8
Mouse	20472	Q62232

Cellular Localization	Nucleus
Tissue specificity	Strongly expressed in skeletal muscle. Expressed in Wilms' tumor and in the cap mesenchyme of fetal kidney (at protein level).

Validation Data



Various whole cell lysates were separated by 4-20% SDS-PAGE, and the membrane was blotted with anti-SIX2 antibody. The HRP-conjugated Goat anti-Rabbit IgG(H + L) antibody was used to detect the antibody.

Lane 1: RD

Lane 2: Neuro-2a

Lane 3: Rat brain

Predicted band size: 32kDa

Observed band size: 38kDa

For Research Use Only