

xCT Rabbit mAb (AR1384)

Key Features

Host Species:	Rabbit
Reactivity:	Human, Mouse, Rat
Applications:	WB, IHC, IF, IP, ELISA
Isotype:	IgG, Kappa
MW:	55kD (Calculated) 37kD (Observed)

Recommended Dilution Ratios

IHC:	1:200-1000
WB:	1:1000-5000
IF:	1:200-1000
ELISA:	1:5000-20000
IP:	1:50-200

Storage

-15°C to -25°C/1 year (Do not lower than -25°C)

Basic Information

Clonality	Monoclonal
-----------	------------

Immunogen Information

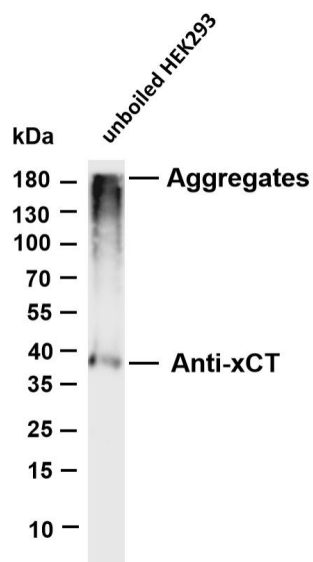
Specificity	Endogenous
-------------	------------

Target Information

Gene name	SLC7A11
Protein Name	Cystine/glutamate transporter (Amino acid transport system xc-) (Calcium channel blocker resistance protein CCB1) (Solute carrier family 7 member 11) (xCT)

	Organism	Gene ID	UniProt ID
	Human	23657	Q9UPY5
	Mouse	26570	Q9WTR6
Cellular Localization	Membrane		

Validation Data

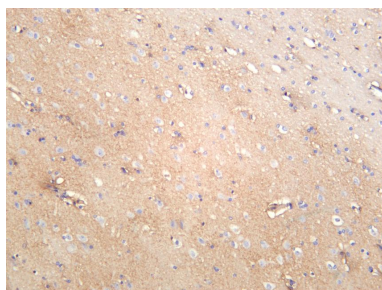


Various whole cell lysates were separated by 4-20% SDS-PAGE, and the membrane was blotted with anti-Anti-xCT antibody. The HRP-conjugated Goat anti-Rabbit IgG(H + L) antibody was used to detect the antibody.

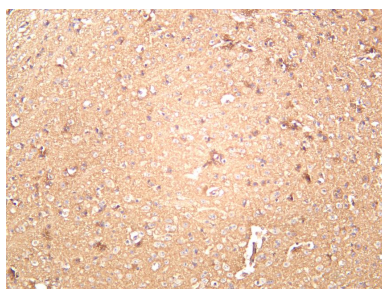
Lane 1: unboiled HEK293

Predicted band size: 55kDa

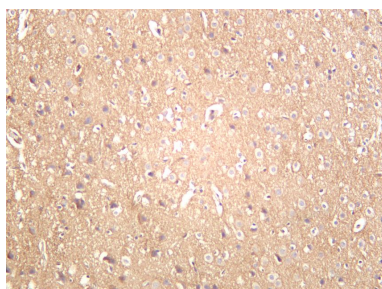
Observed band size: 37kDa



Human brain was stained with anti-xCT rabbit antibody



Mouse brain was stained with anti-xCT rabbit antibody



Rat brain was stained with anti-xCT rabbit antibody

For Research Use Only