

Smad4 Rabbit mAb (AR1386)

Key Features

Host Species:	Rabbit
Reactivity:	Human, Mouse, Rat
Applications:	WB, IHC, IF, IP, ELISA
Isotype:	IgG, Kappa
MW:	60kD (Calculated) 60kD (Observed)

Recommended Dilution Ratios

IHC:	1:2000-10000
WB:	1:2000-10000
IF:	1:200-1000
ELISA:	1:5000-20000
IP:	1:50-200

Storage

-15°C to -25°C/1 year (Do not lower than -25°C)

Basic Information

Clonality	Monoclonal
-----------	------------

Immunogen Information

Specificity	Endogenous
-------------	------------

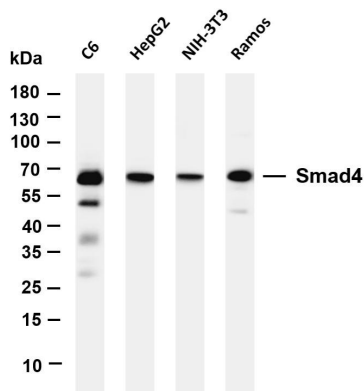
Target Information

Gene name	SMAD4
Protein Name	Mothers against decapentaplegic homolog 4

Organism	Gene ID	UniProt ID
Human	4089	Q13485
Mouse	17128	P97471
Rat	50554	O70437

Cellular Localization	Cytoplasm
Tissue specificity	Fetal brain, Muscle, Placenta

Validation Data



Various whole cell lysates were separated by 4-20% SDS-PAGE, and the membrane was blotted with anti-Smad4 antibody. The HRP-conjugated Goat anti-Rabbit IgG(H + L) antibody was used to detect the antibody.

Lane 1: C6

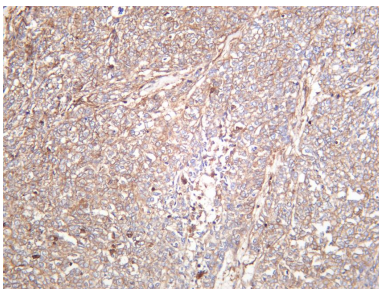
Lane 2: HepG2

Lane 3: NIH-3T3

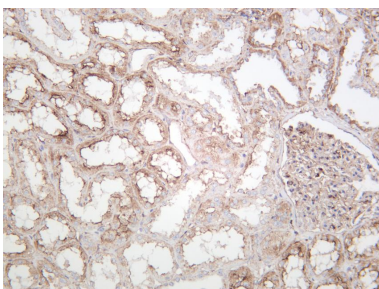
Lane 4: Ramos

Predicted band size: 60kDa

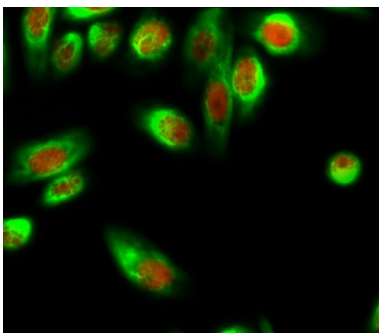
Observed band size: 60kDa



Human breast carcinoma was stained with anti-Smad4 rabbit antibody



Human kidney was stained with anti-Smad4 rabbit antibody



Immunofluorescence analysis of HeLa cell.

1. Smad4 Antibody(red) was diluted at 1:200(4° overnight). GAPDH Monoclonal Antibody(2B8)(green) was diluted at 1:200(4 ° overnight).
2. Goat Anti Rabbit Alexa Fluor 594 was diluted at 1:1000(room temperature, 50min). Goat Anti Mouse Alexa Fluor 488 was diluted at 1:1000(room temperature, 50min).

For Research Use Only