

Slug Rabbit mAb (AR1385)

Key Features

Host Species:	Rabbit
Reactivity:	Human, Mouse
Applications:	WB, IF, IP, ELISA
Isotype:	IgG, Kappa
MW:	30kD (Calculated) 36kD (Observed)

Recommended Dilution Ratios

WB:	1:500-2000
IF:	1:200-1000
ELISA:	1:5000-20000
IP:	1:50-200

Storage

-15°C to -25°C/1 year (Do not lower than -25°C)

Basic Information

Clonality	Monoclonal
-----------	------------

Immunogen Information

Specificity	Endogenous
-------------	------------

Target Information

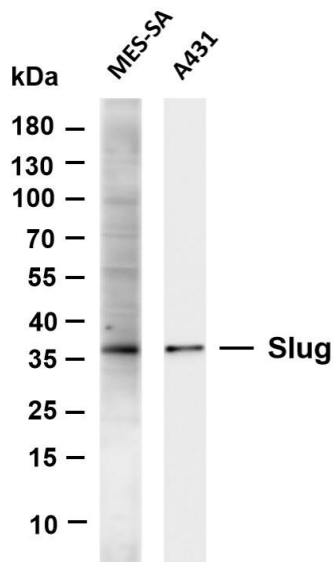
Gene name	SNAI2 SLUG SLUGH
Protein Name	SLUG

Organism	Gene ID	UniProt ID
Human	6591	O43623
Mouse	20583	P97469
Rat	25554	O08954

Cellular Localization	Cytoplasm, Nucleus
Tissue specificity	Expressed in most adult human tissues, including spleen, thymus, prostate, testis, ovary, small intestine, colon, heart, brain, placenta, lung, liver, skeletal muscle, kidney and pancreas. Not detected in peripheral blood leukocyte. Expressed in the dermis and in all

layers of the epidermis, with high levels of expression in the basal layers (at protein level). Expressed in osteoblasts (at protein level). Expressed in mesenchymal stem cells (at protein level). Expressed in breast tumor cells (at protein level).

Validation Data



Various whole cell lysates were separated by 4-20% SDS-PAGE, and the membrane was blotted with anti-Slug antibody. The HRP-conjugated Goat anti-Rabbit IgG(H + L) antibody was used to detect the antibody.

Lane 1: MES-SA

Lane 2: A431

Predicted band size: 30kDa

Observed band size: 36kDa

For Research Use Only