

STAT5A/B Rabbit mAb (AR1387)

Key Features

Host Species:	Rabbit
Reactivity:	Human, Mouse, Rat
Applications:	WB, IHC, IF, IP, ELISA
Isotype:	IgG, Kappa
MW:	91kD (Calculated) 100kD (Observed)

Recommended Dilution Ratios

IHC:	1:2000-8000
WB:	1:2000-10000
IF:	1:200-1000
ELISA:	1:5000-20000
IP:	1:50-200

Storage

-15°C to -25°C/1 year (Do not lower than -25°C)

Basic Information

Clonality	Monoclonal
-----------	------------

Immunogen Information

Specificity	Endogenous
-------------	------------

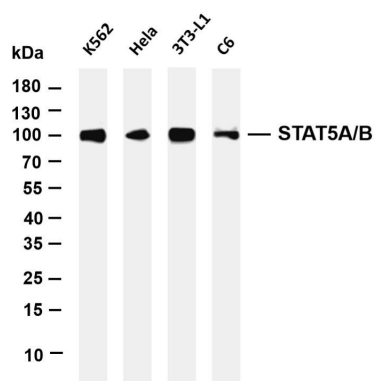
Target Information

Gene name	STAT5A/STAT5B
Protein Name	Signal transducer and activator of transcription 5A/B

Organism	Gene ID	UniProt ID
Human	6776; 6777	P42229; P51692
Mouse	20850; 20851	
Rat	24918; 25126	Q62771; P52632

Cellular Localization	Cytoplasm, Nucleus
Tissue specificity	Brain, Cervix, Epithelium, Lung, Placenta, Synovial membrane

Validation Data



Various whole cell lysates were separated by 4-20% SDS-PAGE, and the membrane was blotted with anti-STAT5A/B antibody. The HRP-conjugated Goat anti-Rabbit IgG(H + L) antibody was used to detect the antibody.

Lane 1: K562

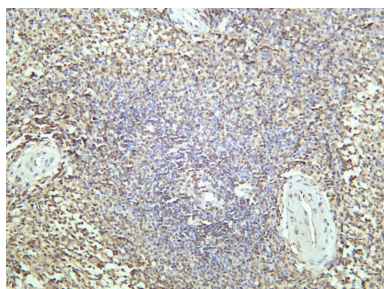
Lane 2: HeLa

Lane 3: 3T3-L1

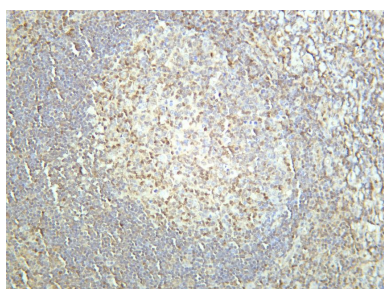
Lane 4: C6

Predicted band size: 91kDa

Observed band size: 100kDa



Human spleen was stained with anti-STAT5A/B rabbit antibody



Human tonsil was stained with anti-STAT5A/B rabbit antibody

For Research Use Only