

## Syk Rabbit mAb (AR1388)

### Key Features

Host Species:	Rabbit
Reactivity:	Human,Mouse,Rat
Applications:	WB,IHC,IF,IP,ELISA
Isotype:	IgG,Kappa
MW:	72kD (Calculated) 65kD (Observed)

### Recommended Dilution Ratios

IHC:	1:400-1000
WB:	1:2000-10000
IF:	1:200-1000
ELISA:	1:5000-20000
IP:	1:50-200

### Storage

-15°C to -25°C/1 year (Do not lower than -25°C)

### Basic Information

Clonality	Monoclonal
-----------	------------

### Immunogen Information

Specificity	Endogenous
-------------	------------

### Target Information

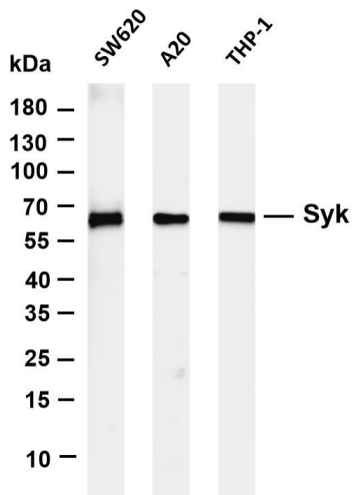
Gene name	SYK
Protein Name	Tyrosine-protein kinase SYK

Organism	Gene ID	UniProt ID
Human	6850	P43405
Mouse	20963	P48025
Rat	25155	Q64725

Cellular Localization	Membrane
Tissue specificity	Widely expressed in hematopoietic cells (at protein level). Expressed in neutrophils (at protein level). Within the B-cell

compartment, expressed from pro- and pre-B cells to plasma cells.

## Validation Data



Various whole cell lysates were separated by 4-20% SDS-PAGE, and the membrane was blotted with anti-Syk antibody. The HRP-conjugated Goat anti-Rabbit IgG(H + L) antibody was used to detect the antibody.

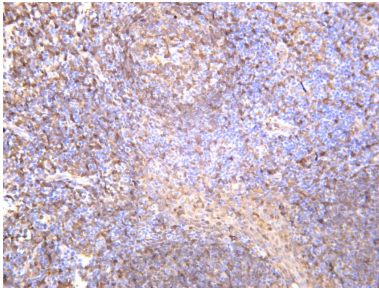
Lane 1: SW620

Lane 2: A20

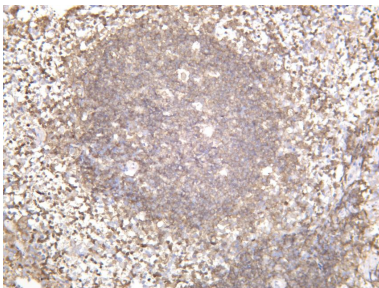
Lane 3: THP-1

Predicted band size: 72kDa

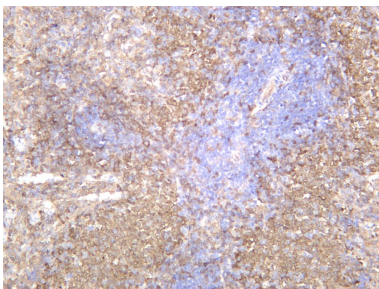
Observed band size: 65kDa



Human spleen was stained with anti-Syk rabbit antibody



Mouse spleen was stained with anti-Syk rabbit antibody



Rat spleen was stained with anti-Syk rabbit antibody

For Research Use Only