

Synapsin I Rabbit mAb (AR1389)

Key Features

Host Species:	Rabbit
Reactivity:	Human,Mouse,Rat
Applications:	WB,IHC,IF,IP,ELISA
Isotype:	IgG,Kappa
MW:	74kD (Calculated) 74, 70kD (Observed)

Recommended Dilution Ratios

IHC:	1:200-1000
WB:	1:2000-10000
IF:	1:200-1000
ELISA:	1:5000-20000
IP:	1:50-200

Storage

-15°C to -25°C/1 year (Do not lower than -25°C)

Basic Information

Clonality	Monoclonal
-----------	------------

Immunogen Information

Specificity	Endogenous
-------------	------------

Target Information

Gene name	SYN1
-----------	------

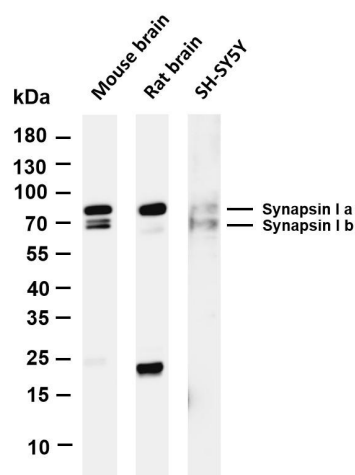
Protein Name	Synapsin-1
--------------	------------

Organism	Gene ID	UniProt ID
Human	6853	P17600
Mouse	20964	O88935
Rat	24949	P09951

Cellular Localization	Synapse
-----------------------	---------

Tissue specificity	Brain, Brain cortex
--------------------	---------------------

Validation Data



Various whole cell lysates were separated by 4-20% SDS-PAGE, and the membrane was blotted with anti-Synapsin I antibody. The HRP-conjugated Goat anti-Rabbit IgG(H + L) antibody was used to detect the antibody.

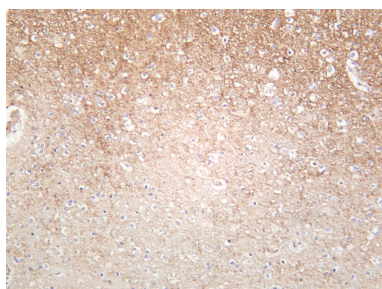
Lane 1: Mouse brain

Lane 2: Rat brain

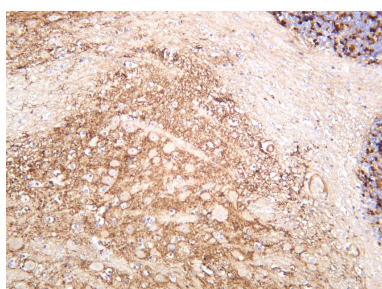
Lane 3: SH-SY5Y

Predicted band size: 74kDa

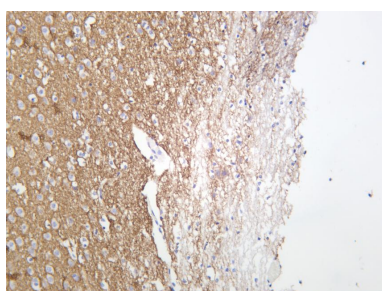
Observed band size: 74,70kDa



Human brain was stained with anti-Synapsin I rabbit antibody



Mouse brain was stained with anti-Synapsin I rabbit antibody



Rat brain was stained with anti-Synapsin I rabbit antibody

For Research Use Only