

Synaptophysin Rabbit mAb (AR1390)

Key Features

Host Species:	Rabbit
Reactivity:	Human, Mouse, Rat
Applications:	WB, IHC, IF, IP, ELISA
Isotype:	IgG, Kappa
MW:	34kD (Calculated) 38kD (Observed)

Recommended Dilution Ratios

IHC:	1:2000-50000
WB:	1:2000-10000
IF:	1:200-1000
ELISA:	1:5000-20000
IP:	1:50-200

Storage

-15°C to -25°C/1 year (Do not lower than -25°C)

Basic Information

Clonality	Monoclonal
-----------	------------

Immunogen Information

Specificity	Endogenous
-------------	------------

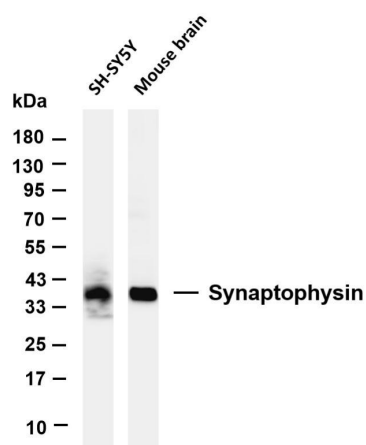
Target Information

Gene name	SYP
Protein Name	Major synaptic vesicle protein p38; MRX96; MRXSYP; Syn p38; Synaptophysin; Syp; SYPH; SYPH_HUMAN; SypI

	Organism	Gene ID	UniProt ID
	Human	6855	P08247
	Mouse		Q62277
	Rat		P07825

Cellular Localization	Cytoplasmic
Tissue specificity	Pancreas/ Colon

Validation Data



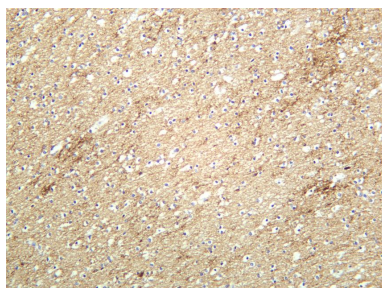
Various whole cell lysates were separated by 4-20% SDS-PAGE, and the membrane was blotted with anti-Synaptophysin antibody. The HRP conjugated Goat anti-Rabbit IgG(H + L) antibody was used to detect the antibody.

Lane 1: SH-SY5Y

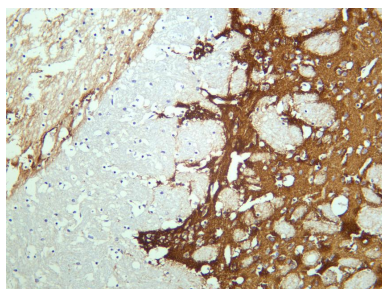
Lane 2: Mouse brain

Predicted band size: 34kDa

Observed band size: 38kDa



Human brain was stained with anti-Synaptophysin rabbit antibody



Mouse brain was stained with anti-Synaptophysin rabbit antibody

For Research Use Only