

## TAGLN Rabbit mAb (AR1391)

### Key Features

Host Species:	Rabbit
Reactivity:	Human, Mouse, Rat
Applications:	WB, IHC, IF, IP, ELISA
Isotype:	IgG, Kappa
MW:	23kD (Calculated) 23kD (Observed)

### Recommended Dilution Ratios

IHC:	1:200-1000
WB:	1:2000-10000
IF:	1:200-1000
ELISA:	1:5000-20000
IP:	1:50-200

### Storage

-15°C to -25°C/1 year (Do not lower than -25°C)

### Basic Information

Clonality	Monoclonal
-----------	------------

### Immunogen Information

Specificity	Endogenous
-------------	------------

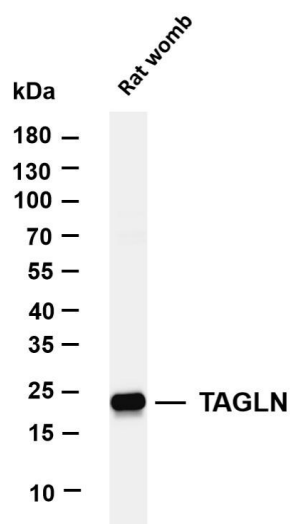
### Target Information

Gene name	TAGLN SM22 WS3-10
Protein Name	Transgelin (22 kDa actin-binding protein) (Protein WS3-10) (Smooth muscle protein 22- alpha) (SM22-alpha)

Organism	Gene ID	UniProt ID
Human	6876	Q01995
Mouse		P37804
Rat		P31232

Cellular Localization	Cytoplasm
Tissue specificity	Aorta, Bone marrow, Brain, Fibroblast, Human small intestine, Peripheral blood, Uterus, White Matter

## Validation Data

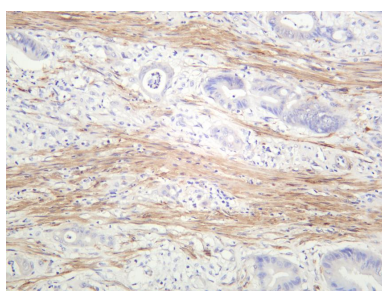


Various whole cell lysates were separated by 4-20% SDS-PAGE, and the membrane was blotted with anti-TAGLN antibody. The HRP-conjugated Goat anti-Rabbit IgG(H + L) antibody was used to detect the antibody.

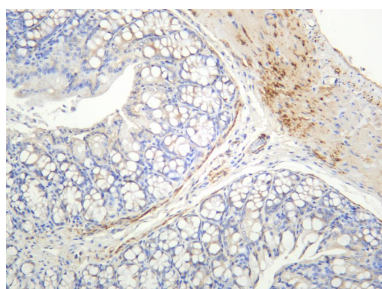
Lane 1: Rat womb

Predicted band size: 23kDa

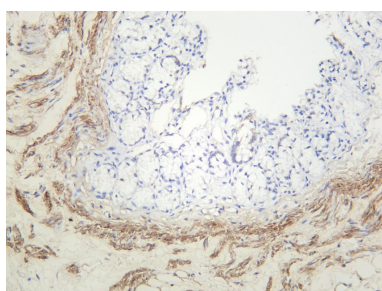
Observed band size: 23kDa



Human colon carcinoma was stained with anti-TAGLN rabbit antibody



Mouse colon was stained with anti-TAGLN rabbit antibody



Rat colon was stained with anti-TAGLN rabbit antibody

