

TGF β Receptor II Rabbit mAb (AR1392)

Key Features

Host Species:	Rabbit
Reactivity:	Human, Mouse, Rat
Applications:	WB, IHC, IF, IP, ELISA
Isotype:	IgG, Kappa
MW:	65kD (Calculated) 65kD (Observed)

Recommended Dilution Ratios

IHC:	1:200-500
WB:	1:1000-5000
IF:	1:200-1000
ELISA:	1:5000-20000
IP:	1:50-200

Storage

-15°C to -25°C/1 year (Do not lower than -25°C)

Basic Information

Clonality	Monoclonal
-----------	------------

Immunogen Information

Specificity	Endogenous
-------------	------------

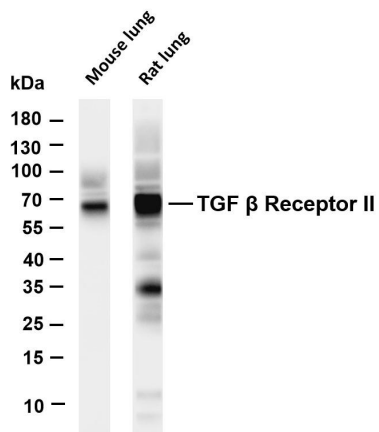
Target Information

Gene name	TGFBR2
Protein Name	TGF-beta receptor type-2

Organism	Gene ID	UniProt ID
Human	7048	P37173
Mouse	21813	Q62312
Rat	81810	P38438

Cellular Localization	Membrane
Tissue specificity	Cerebellum, Colon, Epithelium, Glial cell, Liver

Validation Data



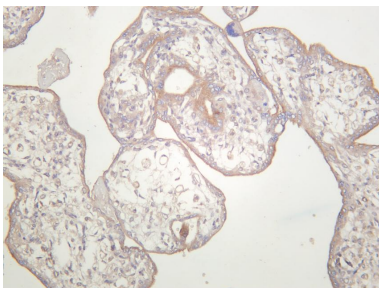
Various whole cell lysates were separated by 4-20% SDS-PAGE, and the membrane was blotted with anti-TGF β Receptor II antibody. The HRP conjugated Goat anti-Rabbit IgG (H + L) antibody was used to detect the antibody.

Lane 1: Mouse lung

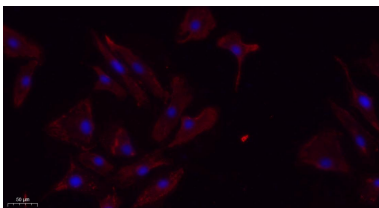
Lane 2: Rat lung

Predicted band size: 65kDa

Observed band size: 65kDa



Human placenta was stained with anti-TGF β Receptor II rabbit antibody



Immunofluorescence analysis of A549.

1. primary Antibody(red) was diluted at 1:200(4°C overnight).
2. Goat Anti Rabbit IgG (H&L) - Alexa Fluor 594 Secondary antibody was diluted at 1:1000(room temperature, 50min).
3. DAPI (blue) 10min.

For Research Use Only