

## TTF-1 Rabbit mAb (AR1393)

### Key Features

Host Species:	Rabbit
Reactivity:	Human,Mouse,Rat
Applications:	WB,IHC,IF,IP,ELISA
Isotype:	IgG,Kappa
MW:	39kD (Calculated) 39kD (Observed)

### Recommended Dilution Ratios

IHC:	1:200-1000
WB:	1:2000-10000
IF:	1:200-1000
ELISA:	1:5000-20000
IP:	1:50-200

### Storage

-15°C to -25°C/1 year (Do not lower than -25°C)

### Basic Information

Clonality	Monoclonal
-----------	------------

### Immunogen Information

Specificity	Endogenous
-------------	------------

### Target Information

Gene name	NKX2-1
Protein Name	AV026640; BCH; Benign chorea; BHC; Homeobox protein NK 2 homolog A; Homeobox protein NK-2 homolog A; Homeobox protein Nkx 2.1; Homeobox protein Nkx-2.1; Homeobox protein Nkx2.1; NK 2 homolog A; NK2; NK2 homeobox 1; NK2, drosophila, homolog of, A; NK2.1, mouse, homolog of; T/EBP; TEBP; Thyroid nuclear factor 1; Thyroid nuclear factor; Thyroid specific enhancer binding protein; Thyroid transcription factor 1; Tin man; Tinman; TITF1.

Organism	Gene ID	UniProt ID
Human	7080	P43699

Mouse

P50220

Rat

P23441

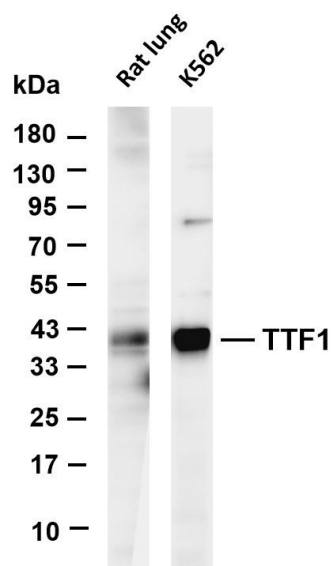
Cellular Localization

Nuclear

Tissue specificity

Thyroid/ Lung

## Validation Data



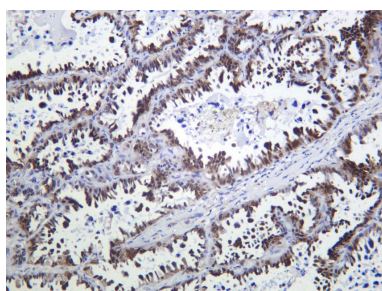
Various whole cell lysates were separated by 4-20% SDS-PAGE, and the membrane was blotted with anti-TTF1 antibody. The HRP-conjugated Goat anti-Rabbit IgG(H + L) antibody was used to detect the antibody.

Lane 1: Rat lung

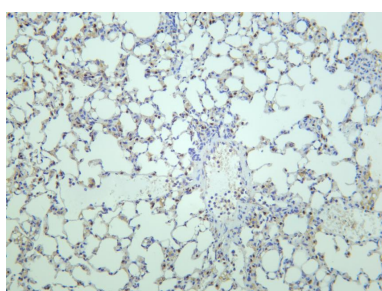
Lane 2: K562

Predicted band size: 39kDa

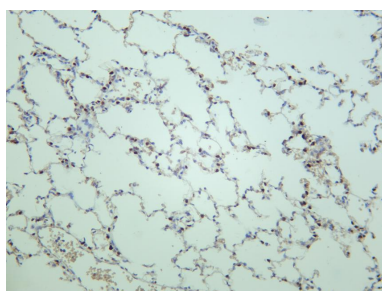
Observed band size: 39kDa



Human lung adenocarcinoma was stained with anti-TTF-1 Rabbit antibody



Mouse lung was stained with anti-TTF1 rabbit antibody



Rat lung was stained with anti-TTF1 rabbit antibody