

## TWIST1 Rabbit mAb (AR1394)

### Key Features

Host Species:	Rabbit
Reactivity:	Human,Mouse,Rat
Applications:	WB,IF,IP,ELISA
Isotype:	IgG,Kappa
MW:	21kD (Calculated) 30kD (Observed)

### Recommended Dilution Ratios

WB:	1:2000-10000
IF:	1:200-1000
ELISA:	1:5000-20000
IP:	1:50-200

### Storage

-15°C to -25°C/1 year (Do not lower than -25°C)

### Basic Information

Clonality	Monoclonal
-----------	------------

### Immunogen Information

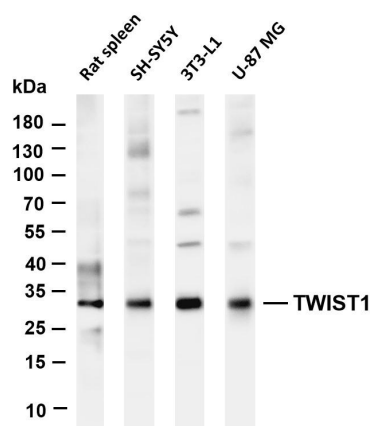
Specificity	Endogenous
-------------	------------

### Target Information

Gene name	TWIST1 BHLHA38 TWIST
Protein Name	Twist-related protein 1 (Class A basic helix-loop-helix protein 38) (bHLHa38) (H-twist)

	Organism	Gene ID	UniProt ID
	Human	7291	Q15672
	Mouse		P26687
Cellular Localization	Nucleus		
Tissue specificity	Subset of mesodermal cells.		

## Validation Data



Various whole cell lysates were separated by 4-20% SDS-PAGE, and the membrane was blotted with anti-TWIST1 antibody. The HRP-conjugated Goat anti-Rabbit IgG(H + L) antibody was used to detect the antibody.

Lane 1: Rat spleen

Lane 2: SH-SY5Y

Lane 3: 3T3-L1

Lane 4: U-87 MG

Predicted band size: 21kDa

Observed band size: 30kDa

For Research Use Only