

Actinin- α 2 Rabbit mAb (AR1396)

Key Features

Host Species:	Rabbit
Reactivity:	Human, Mouse, Rat
Applications:	WB, IHC, IF, IP, ELISA
Isotype:	IgG, Kappa
MW:	104kD (Calculated) 104kD (Observed)

Recommended Dilution Ratios

IHC:	1:200-1000
WB:	1:500-2000
IF:	1:200-1000
ELISA:	1:5000-20000
IP:	1:50-200

Storage

-15°C to -25°C/1 year (Do not lower than -25°C)

Basic Information

Clonality	Monoclonal
-----------	------------

Immunogen Information

Specificity	Endogenous
-------------	------------

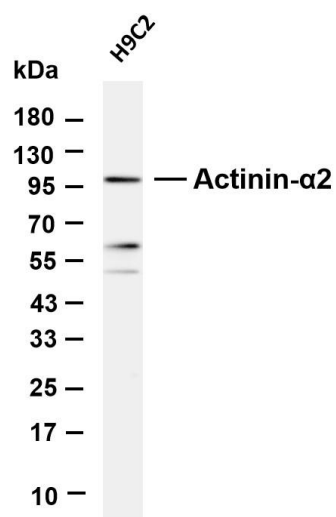
Target Information

Gene name	ACTN2/ACTN3
Protein Name	Alpha-actinin-2

Organism	Gene ID	UniProt ID
Human	88	P35609
Mouse		Q9JI91

Cellular Localization	Cytoplasm, myofibril, sarcomere, Z line. Colocalizes with MYOZ1 and FLNC at the Z-lines of skeletal muscle.
Tissue specificity	Expressed in both skeletal and cardiac muscle.

Validation Data

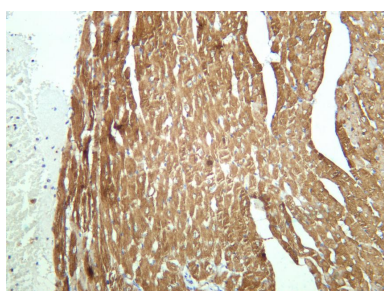


Various whole cell lysates were separated by 4-20% SDS-PAGE, and the membrane was blotted with anti-Actinin-α2 antibody. The HRP-conjugated Goat anti-Rabbit IgG (H + L) antibody was used to detect the antibody.

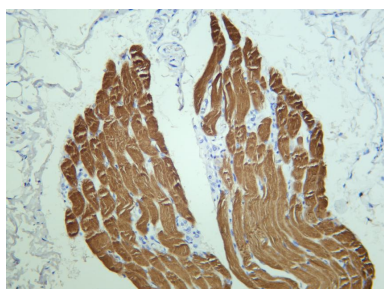
Lane 1: H9C2

Predicted band size: 104kDa

Observed band size: 104kDa



Mouse cardiac muscle was stained with anti-Actinin- α 2 rabbit antibody



Human skeletal muscle was stained with anti-Actinin- α 2 rabbit antibody

For Research Use Only