

ACTL8 Rabbit mAb (AR1397)

Key Features

Host Species:	Rabbit
Reactivity:	Human
Applications:	WB,IP,Flow Cyt
Isotype:	IgG,Kappa
MW:	41kD (Calculated) 41kD (Observed)

Recommended Dilution Ratios

WB:	1:1000-5000
IP:	1:50-100
FC:	1:100-300

Storage

-15°C to -25°C/1 year (Do not lower than -25°C)

Basic Information

Clonality	Monoclonal
-----------	------------

Immunogen Information

Specificity	Endogenous
-------------	------------

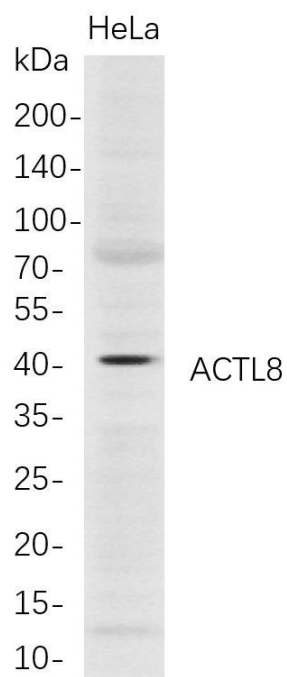
Target Information

Gene name	ACTL8
Protein Name	Actin-like protein 8; Cancer/testis antigen 57; CT57

Organism	Gene ID	UniProt ID
Human	81569	Q9H568

Cellular Localization	Cytoplasm, cytoskeleton.
Tissue specificity	Strongly expressed in testis and pancreas. Weak expression in placenta. {ECO:0000269 PubMed:15905330}.

Validation Data



Western Blot analysis of HeLa whole cell lysates were separated by 4-20% SDS-PAGE, and the membrane was blotted with anti-ACTL8 rabbit mAb. The HRP-conjugated Goat anti-Rabbit IgG(H + L) antibody was used to detect the antibody.

Lane 1: HELA

Predicted band size: 41kDa

Observed band size: 41kDa

For Research Use Only