

## ACTR1B Rabbit mAb (AR1398)

### Key Features

Host Species:	Rabbit
Reactivity:	Human
Applications:	WB,IHC,IF,ICC,Flow Cyt,IP
Isotype:	IgG,Kappa
MW:	42kD (Calculated) 42kD (Observed)

### Recommended Dilution Ratios

IHC:	1:100-300
WB:	1:1000-5000
IF/ICC:	1:100-300
FC:	1:100-300
IP:	1:50-200

### Storage

-15°C to -25°C/1 year (Do not lower than -25°C)

### Basic Information

Clonality	Monoclonal
-----------	------------

### Immunogen Information

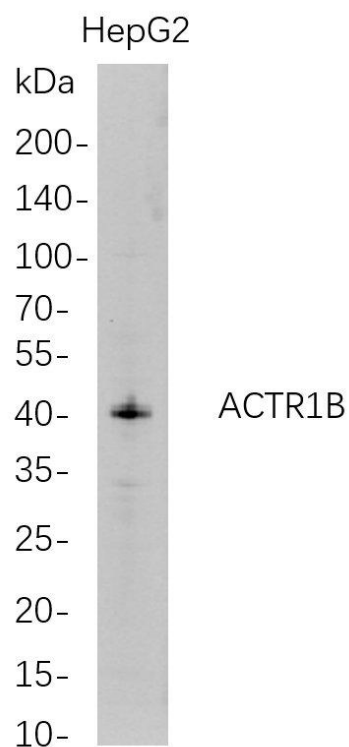
Specificity	Endogenous
-------------	------------

### Target Information

Gene name	ACTR1B; CTRN2
Protein Name	Beta-centractin; Actin-related protein 1B; ARP1B;

	Organism	Gene ID	UniProt ID
	Human	10120	P42025
	Mouse	226977	Q8R5C5
Cellular Localization	Cytoplasm, cytoskeleton. Cytoplasm, cytoskeleton, microtubule organizing center, centrosome.		

## Validation Data



Western Blot analysis of HepG2 whole cell lysates were separated by 4-20% SDS-PAGE, and the membrane was blotted with anti-ACTR1B rabbit mAb. The HRP-conjugated Goat anti-Rabbit IgG(H + L) antibody was used to detect the antibody.

Lane 1: HepG2

Predicted band size: 42kDa

Observed band size: 42kDa

For Research Use Only