

ADAM10 Rabbit mAb (AR1399)

Key Features

Host Species:	Rabbit
Reactivity:	Human,Mouse,Rat
Applications:	WB,IHC,IF,IP,ELISA
Isotype:	IgG,Kappa
MW:	84kD (Calculated) 84kD (Observed)

Recommended Dilution Ratios

IHC:	1:200-2000
WB:	1:2000-10000
IF:	1:200-1000
ELISA:	1:5000-20000
IP:	1:50-200

Storage

-15°C to -25°C/1 year (Do not lower than -25°C)

Basic Information

Clonality	Monoclonal
-----------	------------

Immunogen Information

Specificity	Endogenous
-------------	------------

Target Information

Gene name	ADAM10
Protein Name	Disintegrin and metalloproteinase domain-containing protein 10

Organism	Gene ID	UniProt ID
Human	102	O14672
Mouse	11487	O35598
Rat		Q10743

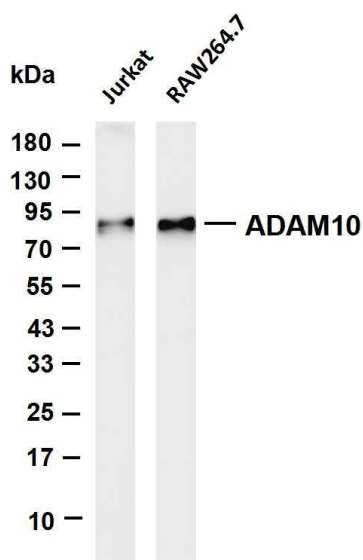
Cellular Localization	Cell membrane; Single-pass type I membrane protein. Golgi apparatus membrane; Single pass type I membrane protein. Cytoplasmic vesicle, clathrin-coated vesicle. Cell projection, axon. Cell projection, dendrite. Cell junction, adherens junction.
-----------------------	--

Cytoplasm. Is localized in the plasma membrane but is also expressed in the Golgi apparatus and in clathrin-coated vesicles derived likely from the Golgi (PubMed:12475894). During long term depression, it is recruited to the cell membrane by DLG1 (PubMed:23676497). The immature form is mainly located near cytoplasmic fibrillar structures, while the mature form is predominantly located at zonula adherens and the cell membrane (PubMed:30463011). The localization and clustering of mature ADAM10 to zonula adherens is regulated by AFDN, TSPAN33, PLEKHA7 and PDZD11 (PubMed:30463011).

Expressed in the brain (at protein level) (PubMed:23676497). Expressed in spleen, lymph node, thymus, peripheral blood leukocyte, bone marrow, cartilage, chondrocytes and fetal liver (PubMed:11511685, PubMed:9016778).

Tissue specificity

Validation Data



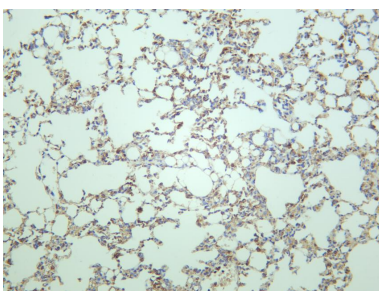
Various whole cell lysates were separated by 4-20% SDS-PAGE, and the membrane was blotted with anti-ADAM10 antibody. The HRP-conjugated Goat anti-Rabbit IgG(H + L) antibody was used to detect the antibody.

Lane 1: Jurkat

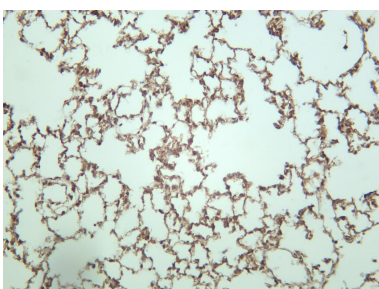
Lane 2: RAW264.7

Predicted band size: 84kDa

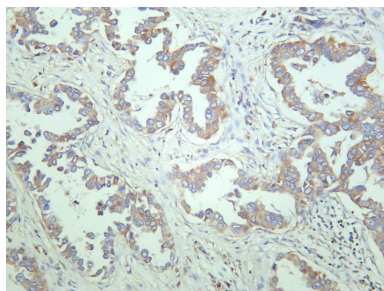
Observed band size: 84kDa



Mouse lung was stained with anti-ADAM10 rabbit antibody



Rat lung was stained with anti-ADAM10 rabbit antibody



Human lung carcinoma was stained with anti-ADAM10 rabbit antibody

For Research Use Only