

AFP Rabbit mAb (AR1400)

Key Features

Host Species:	Rabbit
Reactivity:	Human, Mouse, Rat
Applications:	WB, IHC, IF, IP, ELISA
Isotype:	IgG, Kappa
MW:	68kD (Calculated) 68kD (Observed)

Recommended Dilution Ratios

IHC:	1:200-1000
WB:	1:2000-10000
IF:	1:200-1000
ELISA:	1:5000-20000
IP:	1:50-200

Storage

-15°C to -25°C/1 year (Do not lower than -25°C)

Basic Information

Clonality	Monoclonal
-----------	------------

Immunogen Information

Specificity	Endogenous
-------------	------------

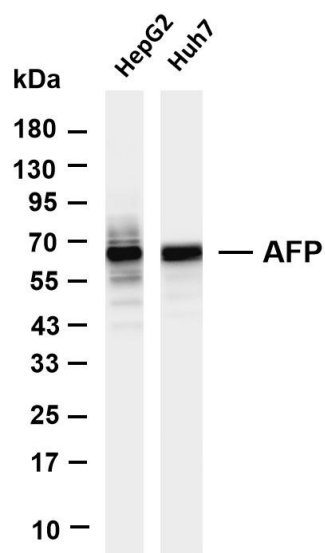
Target Information

Gene name	AFP
Protein Name	Alpha-fetoprotein

Organism	Gene ID	UniProt ID
Human	174	P02771
Mouse	11576	P02772
Rat		P02773

Cellular Localization	Secreted.
Tissue specificity	Plasma. Synthesized by the fetal liver and yolk sac.

Validation Data



Various whole cell lysates were separated by 4-20% SDS-PAGE, and the membrane was blotted with anti-AFP antibody. The HRP-conjugated Goat anti-Rabbit IgG(H + L) antibody was used to detect the antibody.

Lane 1: HepG2

Lane 2: Huh7

Predicted band size: 68kDa

Observed band size: 68kDa

For Research Use Only