

ALDH1A1 Rabbit mAb (AR1403)

Key Features

Host Species:	Rabbit
Reactivity:	Human, Mouse, Rat
Applications:	WB, IHC, IF, IP, ELISA
Isotype:	IgG, Kappa
MW:	55kD (Calculated) 55kD (Observed)

Recommended Dilution Ratios

IHC:	1:500-2000
WB:	1:2000-10000
IF:	1:200-1000
ELISA:	1:5000-20000
IP:	1:50-200

Storage

-15°C to -25°C/1 year (Do not lower than -25°C)

Basic Information

Clonality	Monoclonal
-----------	------------

Immunogen Information

Specificity	Endogenous
-------------	------------

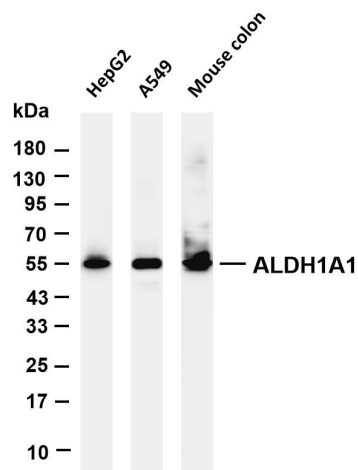
Target Information

Gene name	ALDH1A1
Protein Name	Retinal dehydrogenase 1

Organism	Gene ID	UniProt ID
Human	216	P00352
Mouse		P24549

Cellular Localization	Cytoplasm, cytosol. Cell projection, axon.
Tissue specificity	Expressed by erythrocytes (at protein level).

Validation Data



Various whole cell lysates were separated by 4-20% SDS-PAGE, and the membrane was blotted with anti-ALDH1A1 antibody. The HRP-conjugated Goat anti-Rabbit IgG(H + L) antibody was used to detect the antibody.

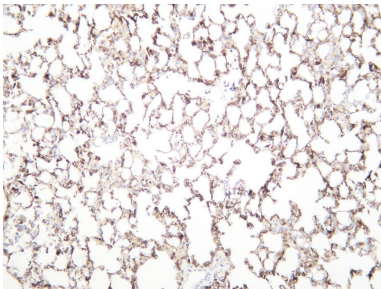
Lane 1: HepG2

Lane 2: A549

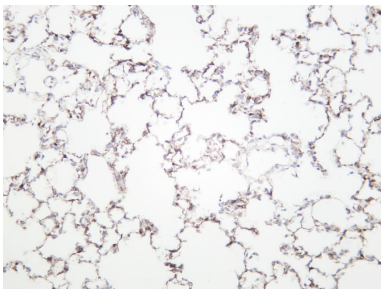
Lane 3: Mouse colon

Predicted band size: 55kDa

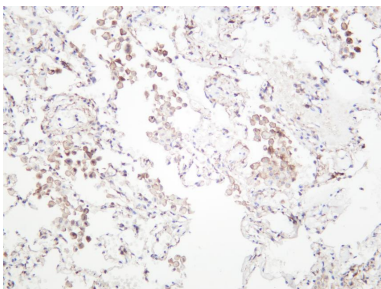
Observed band size: 55kDa



Mouse lung was stained with anti-ALDH1A1 rabbit antibody



Rat lung was stained with anti-ALDH1A1 rabbit antibody



Human lung was stained with anti-ALDH1A1 rabbit antibody

For Research Use Only