

## FTO Rabbit mAb (AR1201)

### Key Features

Host Species:	Rabbit
Reactivity:	Human,Mouse,Rat
Applications:	WB,IHC,IF,IP,ELISA
Isotype:	IgG,Kappa
MW:	58kD (Calculated) 58kD (Observed)

### Recommended Dilution Ratios

IHC:	1:3000-20000
WB:	1:1000-5000
IF:	1:200-1000
ELISA:	1:5000-20000
IP:	1:50-200

### Storage

-15°C to -25°C/1 year (Do not lower than -25°C)

### Basic Information

Clonality	Monoclonal
-----------	------------

### Immunogen Information

Specificity	Endogenous
-------------	------------

### Target Information

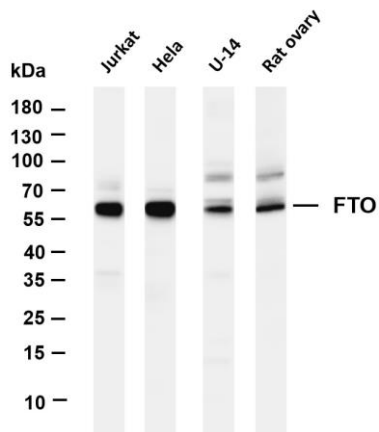
Gene name	FTO
Protein Name	Alpha-ketoglutarate-dependent dioxygenase FTO

Organism	Gene ID	UniProt ID
Human	79068	Q9C0B1
Mouse	26383	Q8BGW1
Rat	291905	Q2A121

Cellular Localization	Cytoplasm, Nucleus
Tissue specificity	Ubiquitously expressed, with relatively high expression in adrenal glands and brain; especially in hypothalamus and pituitary

(PubMed:17434869, PubMed:17496892). Highly expressed in highly expressed in acute myeloid leukemias (AML) with t (11;11) (q23;23) with KMT2A/MLL1 rearrangements, t (15;17) (q21; q21)/PML-RARA, FLT3-ITD, and/or NPM1 mutations (PubMed:28017614).

## Validation Data



Various whole cell lysates were separated by 4-20% SDS-PAGE, and the membrane was blotted with anti- FTO antibody. The HRP-conjugated Goat anti-Rabbit IgG(H + L) antibody was used to detect the antibody.

Lane 1: Jurkat

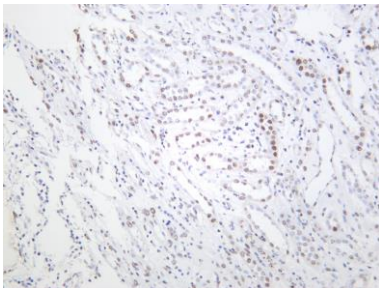
Lane 2: HeLa

Lane 3: U-14

Lane 4: Rat ovary

Predicted band size: 58kDa

Observed band size: 58kDa



Human kidney was stained with anti-FTO rabbit antibody

For Research Use Only