

Catenin δ -1 Rabbit mAb (AR1203)

Key Features

Host Species:	Rabbit
Reactivity:	Human,Mouse,Rat
Applications:	WB,IHC,IF,IP,ELISA
Isotype:	IgG,Kappa
MW:	108kD (Calculated) 108kD (Observed)

Recommended Dilution Ratios

IHC:	1:200-1000
WB:	1:1000-5000
IF:	1:200-1000
ELISA:	1:5000-20000
IP:	1:50-200

Storage

-15°C to -25°C/1 year (Do not lower than -25°C)

Basic Information

Clonality	Monoclonal
-----------	------------

Immunogen Information

Specificity	Endogenous
-------------	------------

Target Information

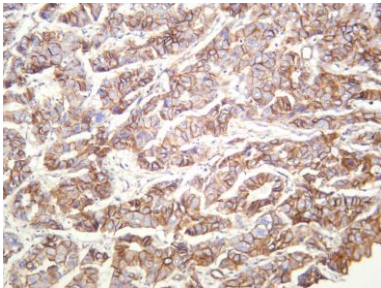
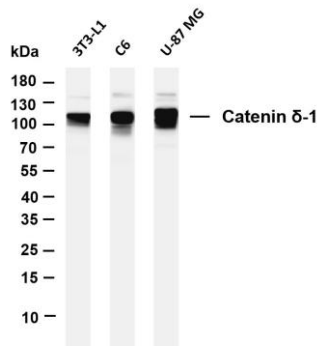
Gene name	CTNND1 KIAA0384
Protein Name	Cadherin associated Src substrate; Cadherin-associated Src substrate; CAS; Catenin (cadherin associated protein) delta 1; Catenin delta 1; Catenin delta; Catenin delta-1; CTND1_HUMAN; CTNND 1; CTNND; CTNND1; delta 1 Catenin; KIAA0384; p120; P120 CAS; p120 catenin; P120 CTN; p120(cas); p120(ctn); P120CAS; P120CTN

Organism	Gene ID	UniProt ID
Human	1500	O60716
Mouse		P30999

Cellular Localization

Tissue specificity

Validation Data



Membrane

Breast/ Tonsil

Various whole cell lysates were separated by 4-20% SDS-PAGE, and the membrane was blotted with anti-Catenin δ -1 antibody. The HRP-conjugated Goat anti-Rabbit IgG(H + L) antibody was used to detect the antibody.

Lane1: 3T3-L1

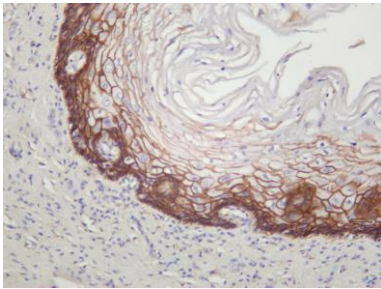
Lane 2: C6

Lane 3: U-87 MG

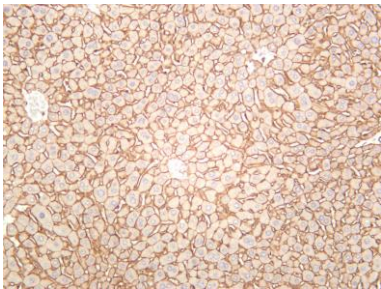
Predicted band size: 108kDa

Observed band size: 108kDa

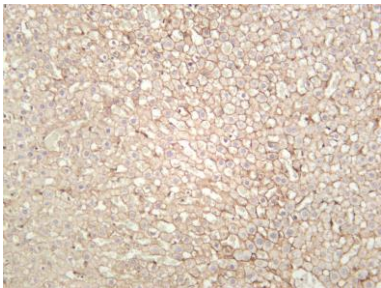
Human cervical squamous carcinoma was stained with anti-Catenin δ -1 rabbit antibody



Human hepatocellular carcinoma was stained with anti-Catenin δ -1 rabbit antibody



Mouse liver was stained with anti-Catenin δ -1 rabbit antibody



Rat liver was stained with anti-Catenin δ -1 rabbit antibody