

## MEK1 Rabbit mAb (AR1204)

### Key Features

Host Species:	Rabbit
Reactivity:	Human,Mouse,Rat
Applications:	WB,IHC,IF,IP,ELISA
Isotype:	IgG,Kappa
MW:	43kD (Calculated) 43kD (Observed)

### Recommended Dilution Ratios

IHC:	1:2000-5000
WB:	1:1000-5000
IF:	1:200-1000
ELISA:	1:5000-20000
IP:	1:50-200

### Storage

-15°C to -25°C/1 year (Do not lower than -25°C)

### Basic Information

Clonality	Monoclonal
-----------	------------

### Immunogen Information

Specificity	Endogenous
-------------	------------

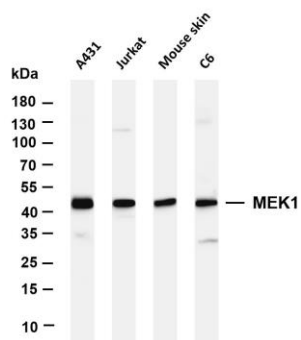
### Target Information

Gene name	MAP2K1
Protein Name	Dual specificity mitogen-activated protein kinase 1

Organism	Gene ID	UniProt ID
Human	5604	Q02750
Mouse	26395	P31938
Rat	170851	Q01986

Cellular Localization	Cytoplasm, Nucleus
Tissue specificity	Widely expressed, with extremely low levels in brain.

## Validation Data



Various whole cell lysates were separated by 4-20% SDS-PAGE, and the membrane was blotted with anti-MEK1 antibody. The HRP-conjugated Goat anti-Rabbit IgG(H + L) antibody was used to detect the antibody.

Lane 1: A431

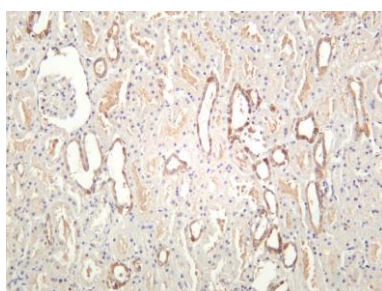
Lane 2: Jurkat

Lane 3: Mouse skin

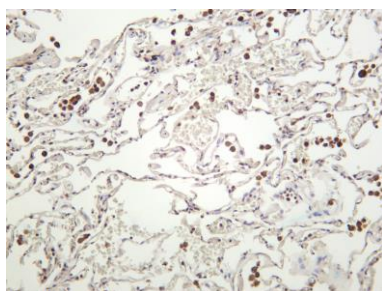
Lane 4: C6

Predicted band size: 43kDa

Observed band size: 43kDa



Human kidney was stained with anti-MEK1 rabbit antibody



Human lung was stained with anti-MEK1 rabbit antibody

For Research Use Only