

Filamin A Rabbit mAb (AR1205)

Key Features

Host Species:	Rabbit
Reactivity:	Human,Mouse,Rat
Applications:	WB,IHC,IF,IP,ELISA
Isotype:	IgG,Kappa
MW:	281kD (Calculated) 281kD (Observed)

Recommended Dilution Ratios

IHC:	1:4000-10000
WB:	1:1000-5000
IF:	1:200-1000
ELISA:	1:5000-20000
IP:	1:50-200

Storage

-15°C to -25°C/1 year (Do not lower than -25°C)

Basic Information

Clonality	Monoclonal
-----------	------------

Immunogen Information

Specificity	Endogenous
-------------	------------

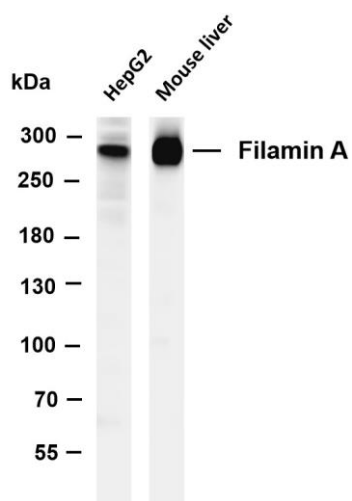
Target Information

Gene name	FLNA
Protein Name	Filamin-A

Organism	Gene ID	UniProt ID
Human	2316	P21333
Mouse	192176	Q8BTM8

Cellular Localization	Cytoplasm
Tissue specificity	Ubiquitous

Validation Data



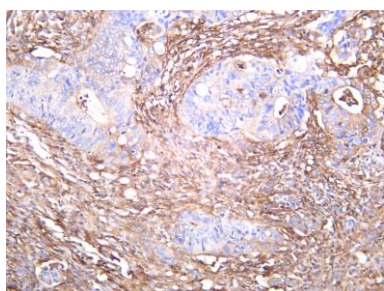
Various whole cell lysates were separated by 4-8% SDS-PAGE, and the membrane was blotted with anti-Filamin A antibody. The HRP-conjugated Goat anti-Rabbit IgG(H + L) antibody was used to detect the antibody.

Lane 1: HepG2

Lane 2: Mouse liver

Predicted band size: 281kDa

Observed band size: 281kDa



Human colon carcinoma was stained with anti-Filamin A rabbit antibody

For Research Use Only