

# HDAC1 Rabbit mAb (AR1206)

## Key Features

Host Species:	Rabbit
Reactivity:	Human,Mouse,Rat
Applications:	WB,IHC,IF,IP,ELISA
Isotype:	IgG,Kappa
MW:	55kD (Calculated) 62kD (Observed)

## Recommended Dilution Ratios

IHC:	1:4000-10000
WB:	1:1000-5000
IF:	1:200-1000
ELISA:	1:5000-20000
IP:	1:50-200

## Storage

-15°C to -25°C/1 year (Do not lower than -25°C)

## Basic Information

Clonality	Monoclonal
-----------	------------

## Immunogen Information

Specificity	Endogenous
-------------	------------

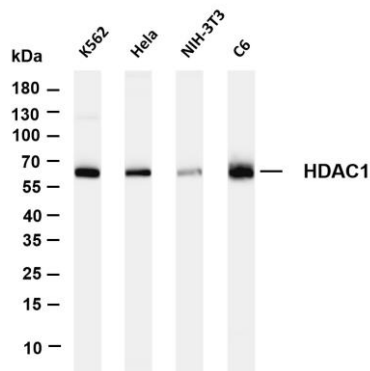
## Target Information

Gene name	HDAC1
Protein Name	Histone deacetylase 1

Organism	Gene ID	UniProt ID
Human	3065	Q13547
Mouse	433759	O09106
Rat	297893	Q4QQW4

Cellular Localization	Nucleus
Tissue specificity	Ubiquitous, with higher levels in heart, pancreas and testis, and lower levels in kidney and brain.

## Validation Data



Various whole cell lysates were separated by 4-20% SDS-PAGE, and the membrane was blotted with anti-HDAC1 antibody. The HRP-conjugated Goat anti-Rabbit IgG(H + L) antibody was used to detect the antibody.

Lane 1: K562

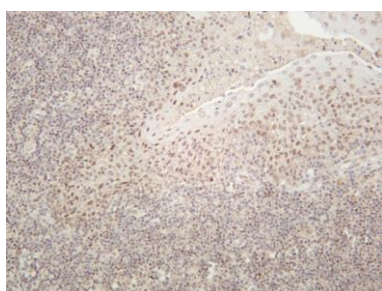
Lane 2: HeLa

Lane 3: NIH-3T3

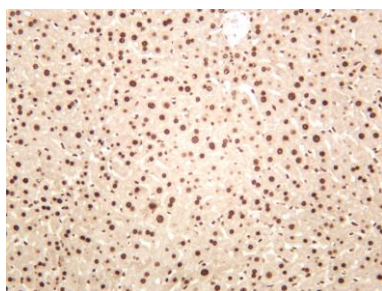
Lane 4: C6

Predicted band size: 55kDa

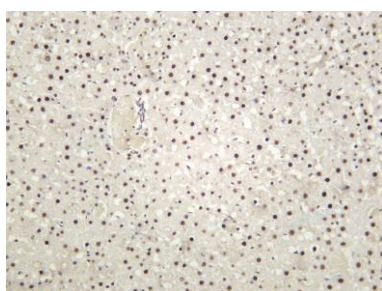
Observed band size: 62kDa



Human tonsil was stained with anti-HDAC1 rabbit antibody



Mouse liver was stained with anti-HDAC1 rabbit antibody



Rat liver was stained with anti-HDAC1 rabbit antibody

For Research Use Only