

Cytochrome C Rabbit mAb (AR1207)

Key Features

Host Species:	Rabbit
Reactivity:	Human, Mouse, Rat
Applications:	WB, IHC, IF, IP, ELISA
Isotype:	IgG, Kappa
MW:	12kD (Calculated) 14kD (Observed)

Recommended Dilution Ratios

IHC:	1:1000-4000
WB:	1:1000-5000
IF:	1:200-1000
ELISA:	1:5000-20000
IP:	1:50-200

Storage

-15°C to -25°C/1 year (Do not lower than -25°C)

Basic Information

Clonality	Monoclonal
-----------	------------

Immunogen Information

Specificity	Endogenous
-------------	------------

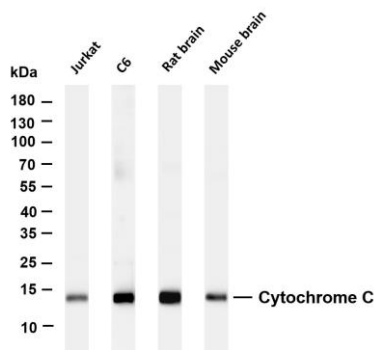
Target Information

Gene name	CYCS CYC
Protein Name	CYCS

Organism	Gene ID	UniProt ID
Human	54205	P99999
Mouse	13063	P62897
Rat		P62898

Cellular Localization	Mitochondrion intermembrane space
Tissue specificity	Amygdala, Bone marrow, Brain, Embryo, Heart, Kidney, Lung, Skeletal muscle, Skin, Testis

Validation Data



Various whole cell lysates were separated by 4-20% SDS-PAGE, and the membrane was blotted with anti-Cytochrome C antibody. The HRP-conjugated Goat anti-Rabbit IgG(H + L) antibody was used to detect the antibody.

Lane 1: Jurkat

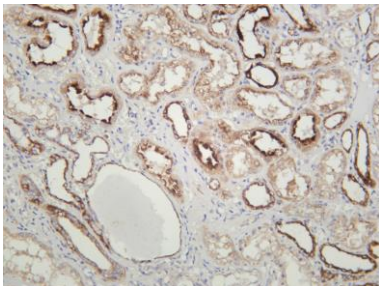
Lane 2: C6

Lane 3: Rat brain

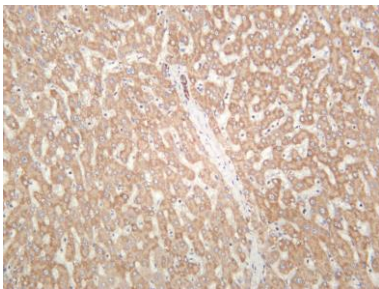
Lane 4: Mouse brain

Predicted band size: 12kDa

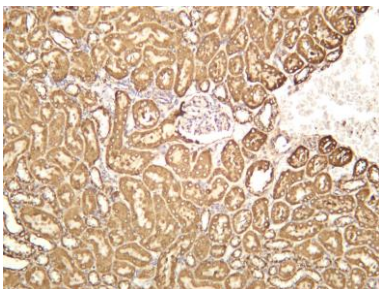
Observed band size: 14kDa



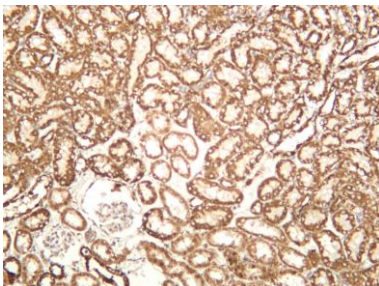
Human kidney was stained with anti-Cytochrome C rabbit antibody



Human liver was stained with anti-Cytochrome C rabbit antibody



Mouse kidney was stained with anti-Cytochrome C rabbit antibody



Rat kidney was stained with anti-Cytochrome C rabbit antibody