

TAK1 Rabbit mAb (AR1209)

Key Features

Host Species:	Rabbit
Reactivity:	Human,Mouse,Rat
Applications:	WB,IF,IP,ELISA
Isotype:	IgG,Kappa
MW:	67kD (Calculated) 67kD (Observed)

Recommended Dilution Ratios

WB:	1:1000-5000
IF:	1:200-1000
ELISA:	1:5000-20000
IP:	1:50-200

Storage

-15°C to -25°C/1 year (Do not lower than -25°C)

Basic Information

Clonality	Monoclonal
-----------	------------

Immunogen Information

Specificity	Endogenous
-------------	------------

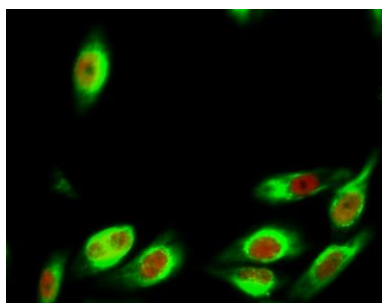
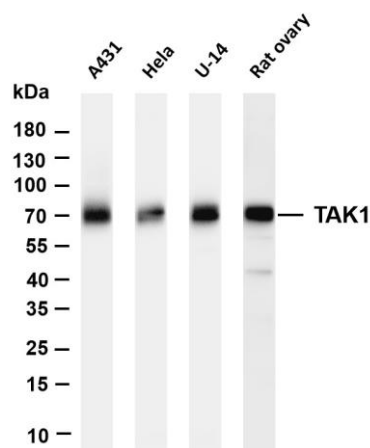
Target Information

Gene name	MAP3K7
Protein Name	Mitogen-activated protein kinase 7

Organism	Gene ID	UniProt ID
Human	6885	O43318
Mouse	26409	Q62073
Rat	313121	P0C8E4

Cellular Localization	Cytoplasm, Membrane
Tissue specificity	Isoform 1A is the most abundant in ovary, skeletal muscle, spleen and blood mononuclear cells. Isoform 1B is highly expressed in brain, kidney and small intestine. Isoform 1C is the major form in prostate. Isoform 1D is the less abundant form.

Validation Data



Various whole cell lysates were separated by 4-20% SDS-PAGE, and the membrane was blotted with anti-TAK1 antibody. The HRP-conjugated Goat anti-Rabbit IgG(H + L) antibody was used to detect the antibody.

Lane 1: A431

Lane 2: HeLa

Lane 3: U-14

Lane 4: Rat ovary

Predicted band size: 67kDa

Observed band size: 67kDa

Immunofluorescence analysis of HeLa cell.

1. Tak1 Antibody(red) was diluted at 1:200(4° overnight). CK7 Monoclonal Antibody(12D7) (green) was diluted at 1:200(4° overnight).
2. Goat Anti Rabbit Alexa Fluor 594 was diluted at 1:1000(room temperature, 50min). Goat Anti Mouse Alexa Fluor 488 was diluted at 1:1000(room temperature, 50min).

For Research Use Only