

## TGF $\beta$ 1/3 Rabbit mAb (AR1211)

### Key Features

Host Species:	Rabbit
Reactivity:	Human,Mouse,Rat
Applications:	WB,IHC,IF,IP,ELISA
Isotype:	IgG,Kappa
MW:	44kD (Calculated) 44kD, 13kD (Observed)

### Recommended Dilution Ratios

IHC:	1:1000-1:4000
WB:	1:500-2000
IF:	1:200-1000
ELISA:	1:5000-20000
IP:	1:50-200

### Storage

-15°C to -25°C/1 year (Do not lower than -25°C)

### Basic Information

Clonality	Monoclonal
-----------	------------

### Immunogen Information

Specificity	Endogenous
-------------	------------

### Target Information

Gene name	TGFB1 TGFB3
Protein Name	Transforming growth factor beta-1 proprotein; Latency-associated Peptide (LAP); Transforming growth factor beta-1(TGF-beta-1); Transforming growth factor beta-3 proprotein; Transforming growth factor beta-3 (TGF-beta-3);

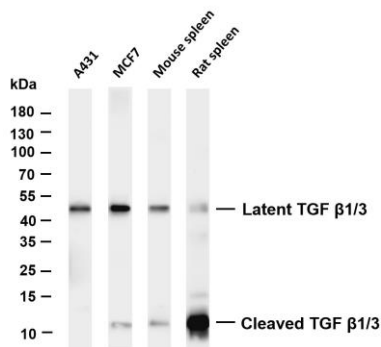
Organism	Gene ID	UniProt ID
Human	7040; 7043	P01137; P10600
Mouse	21803	P04202; P17125
Rat	59086; 25717	P17246; Q07258

Cellular Localization	Secreted
-----------------------	----------

## Tissue specificity

TGF  $\beta$  1: Highly expressed in bone (PubMed:11746498, PubMed:17827158). Abundantly expressed in articular cartilage and chondrocytes and is increased in osteoarthritis (OA) (PubMed:11746498, PubMed:17827158). Colocalizes with ASPN in chondrocytes within OA lesions of articular cartilage (PubMed:17827158).

## Validation Data



Various whole cell lysates were separated by 4-20% SDS-PAGE, and the membrane was blotted with anti-TGF  $\beta$  1/3 antibody. The HRP-conjugated Goat anti-Rabbit IgG(H + L) antibody was used to detect the antibody.

Lane 1: A431

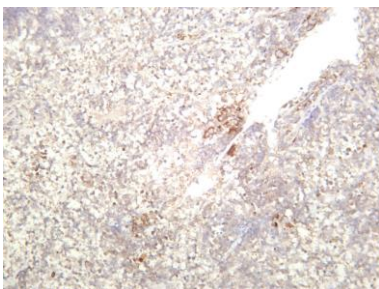
Lane 2: MCF7

Lane 3: Mouse spleen

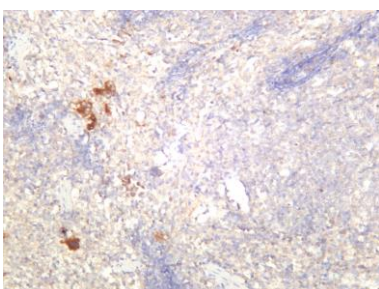
Lane 4: Rat spleen

Predicted band size: 44kDa

Observed band size: 44 kDa, 13kDa



Mouse spleen was stained with anti-TGF  $\beta$  1/3 rabbit antibody



Rat spleen was stained with anti-TGF  $\beta$  1/3 rabbit antibody