

CD146 Rabbit mAb (AR1213)

Key Features

Host Species:	Rabbit
Reactivity:	Human, Mouse, Rat
Applications:	WB, IHC, IF, IP, ELISA
Isotype:	IgG, Kappa
MW:	72kD (Calculated) 125kD (Observed)

Recommended Dilution Ratios

IHC:	1:1000-1:4000
WB:	1:2000-10000
IF:	1:200-1000
ELISA:	1:5000-20000
IP:	1:50-200

Storage

-15°C to -25°C/1 year (Do not lower than -25°C)

Basic Information

Clonality	Monoclonal
-----------	------------

Immunogen Information

Specificity	Endogenous
-------------	------------

Target Information

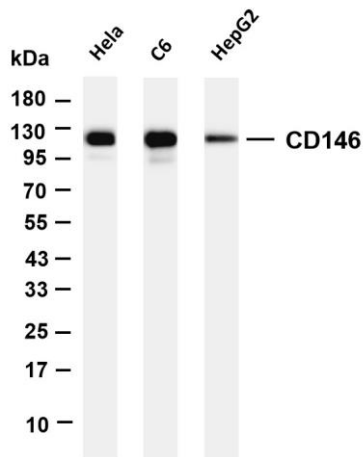
Gene name	MCAM MUC18
Protein Name	CD146

Organism	Gene ID	UniProt ID
Human	4162	P43121

Cellular Localization	Membrane
Tissue specificity	Detected in endothelial cells in vascular tissue throughout the body. May appear at the surface of neural crest cells during their embryonic migration. Appears to be limited to vascular smooth muscle in normal adult tissues. Associated with tumor progression and the development of metastasis in human malignant melanoma.

Expressed most strongly on metastatic lesions and advanced primary tumors and is only rarely detected in benign melanocytic nevi and thin primary melanomas with a low probability of metastasis.

Validation Data



Various whole cell lysates were separated by 4-20% SDS-PAGE, and the membrane was blotted with anti-CD146 antibody. The HRP-conjugated Goat anti-Rabbit IgG(H + L) antibody was used to detect the antibody.

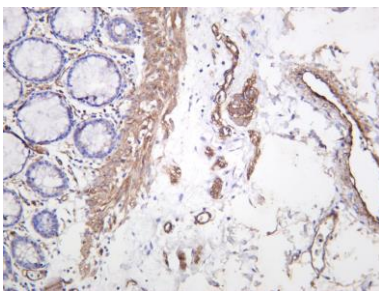
Lane 1: HeLa

Lane 2: C6

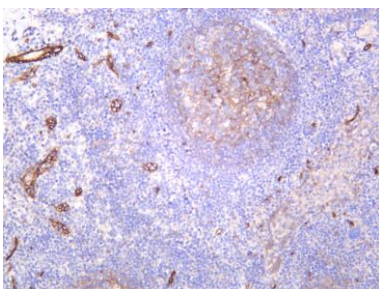
Lane 3: HepG2

Predicted band size: 72kDa

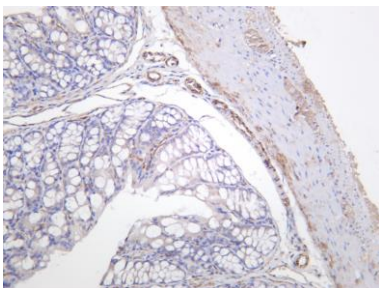
Observed band size: 125kDa



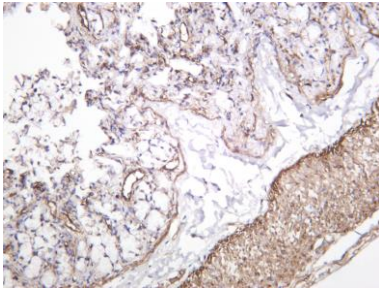
Human colon was stained with anti-CD146 rabbit antibody



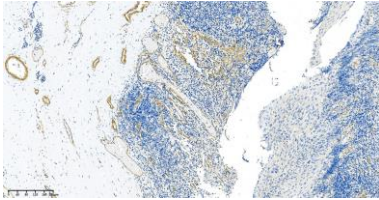
Human tonsil was stained with anti-CD146 rabbit antibody



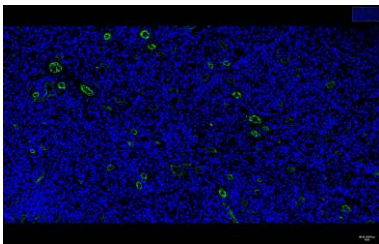
Mouse colon was stained with anti-CD146 rabbit antibody



Rat colon was stained with anti-CD146 rabbit antibody



Human tonsil was stained with anti-CD146 Rabbit antibody



Human tonsil was stained with anti-CD146 Rabbit antibody

For Research Use Only