

Cdc2 Rabbit mAb (AR1215)

Key Features

Host Species:	Rabbit
Reactivity:	Human,Mouse
Applications:	WB, IHC,IF,IP,ELISA
Isotype:	IgG,Kappa
MW:	34kD (Calculated) 34kD (Observed)

Recommended Dilution Ratios

IHC:	1:1000-1:4000
WB:	1:2000-1:10000
IF:	1:200-1000
ELISA:	1:5000-20000
IP:	1:50-200

Storage

-15°C to -25°C/1 year (Do not lower than -25°C)

Basic Information

Clonality	Monoclonal
-----------	------------

Immunogen Information

Specificity	Endogenous
-------------	------------

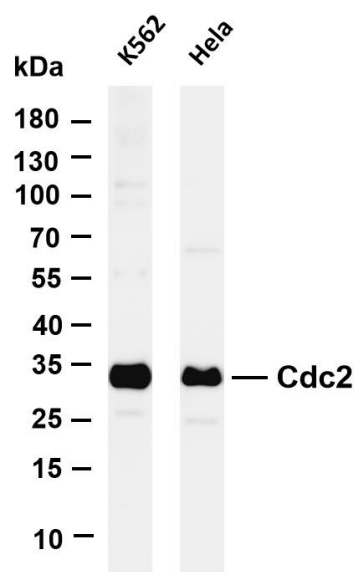
Target Information

Gene name	CDK1
Protein Name	Cyclin-dependent kinase 1

Organism	Gene ID	UniProt ID
Human	983	P06493
Mouse	12534	P11440
Rat	54237	P39951

Cellular Localization	Cytoplasm, Nucleus
Tissue specificity	Isoform 2 is found in breast cancer tissues.

Validation Data



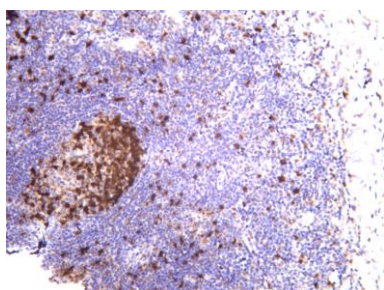
Various whole cell lysates were separated by 4-20% SDS-PAGE, and the membrane was blotted with anti-Cdc2 antibody. The HRP-conjugated Goat anti-Rabbit IgG(H + L) antibody was used to detect the antibody.

Lane 1: K562

Lane 2: HeLa

Predicted band size: 34kDa

Observed band size: 34kDa



Human tonsil was stained with anti-Cdc2 rabbit antibody

For Research Use Only