

MelanA Rabbit mAb (AR1216)

Key Features

Host Species:	Rabbit
Reactivity:	Human, Mouse
Applications:	WB, IHC, IF, IP, ELISA
Isotype:	IgG, Kappa
MW:	13kD (Calculated) 18kD (Observed)

Recommended Dilution Ratios

IHC:	1:400-1:1000
WB:	1:1000-1:5000
IF:	1:200-1000
ELISA:	1:5000-20000
IP:	1:50-200

Storage

-15°C to -25°C/1 year (Do not lower than -25°C)

Basic Information

Clonality	Monoclonal
-----------	------------

Immunogen Information

Specificity	Endogenous
-------------	------------

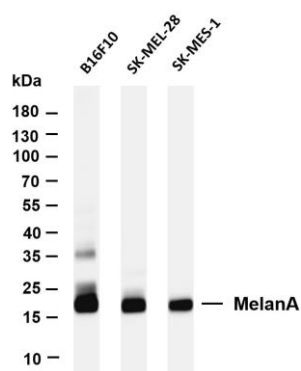
Target Information

Gene name	MLANA MART1
Protein Name	Mart-1/Melan-A

Organism	Gene ID	UniProt ID
Human	2315	Q16655

Cellular Localization	Endoplasmic reticulum membrane
Tissue specificity	Expression is restricted to melanoma and melanocyte cell lines and retina.

Validation Data



Various whole cell lysates were separated by 4-20% SDS-PAGE, and the membrane was blotted with anti-MelanA antibody. The HRP-conjugated Goat anti-Rabbit IgG(H + L) antibody was used to detect the antibody.

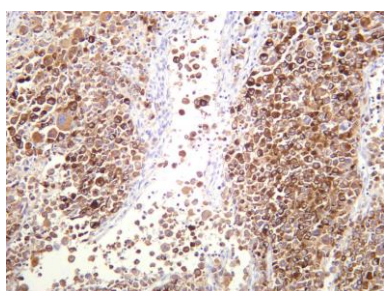
Lane 1: B16F10

Lane 2: SK-MEL-28

Lane 3: SK-MES-1

Predicted band size: 13kDa

Observed band size: 18kDa



Human melanoma was stained with anti-MelanA rabbit antibody

For Research Use Only