

RRM1 Rabbit mAb (AR1217)

Key Features

Host Species:	Rabbit
Reactivity:	Human,Mouse,Rat
Applications:	WB,IF,IP,ELISA
Isotype:	IgG,Kappa
MW:	90kD (Calculated) 90kD (Observed)

Recommended Dilution Ratios

WB:	1:1000-5000
IF:	1:200-1000
ELISA:	1:5000-20000
IP:	1:50-200

Storage

-15°C to -25°C/1 year (Do not lower than -25°C)

Basic Information

Clonality	Monoclonal
-----------	------------

Immunogen Information

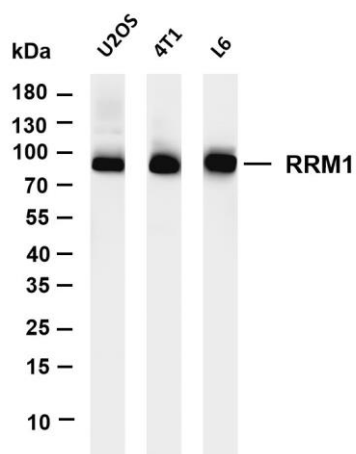
Specificity	Endogenous
-------------	------------

Target Information

Gene name	RRM1 RR1
Protein Name	Ribonucleoside-diphosphate reductase large subunit (Ribonucleoside-diphosphate reductase subunit M1) (Ribonucleotide reductase large subunit)

	Organism	Gene ID	UniProt ID
	Human	6240	P23921
	Mouse	20133	P07742
Cellular Localization	Cytoplasm		

Validation Data



Various whole cell lysates were separated by 4-20% SDS-PAGE, and the membrane was blotted with anti-RRM1 antibody. The HRP-conjugated Goat anti-Rabbit IgG (H + L) antibody was used to detect the antibody.

Lane 1: U2OS

Lane 2: 4T1

Lane 3: L6

Predicted band size: 90kDa

Observed band size: 90kDa

For Research Use Only