

## GSK3 $\alpha/\beta$ Rabbit mAb (AR1219)

### Key Features

Host Species:	Rabbit
Reactivity:	Human, Mouse, Rat
Applications:	WB, IHC, IF, IP, ELISA
Isotype:	IgG, Kappa
MW:	51kD, 47kD (Calculated) 51kD, 47kD (Observed)

### Recommended Dilution Ratios

IHC:	1:400-800
WB:	1:2000-10000
IF:	1:200-1000
ELISA:	1:5000-20000
IP:	1:50-200

### Storage

-15°C to -25°C/1 year (Do not lower than -25°C)

### Basic Information

Clonality	Monoclonal
-----------	------------

### Immunogen Information

Specificity	Endogenous
-------------	------------

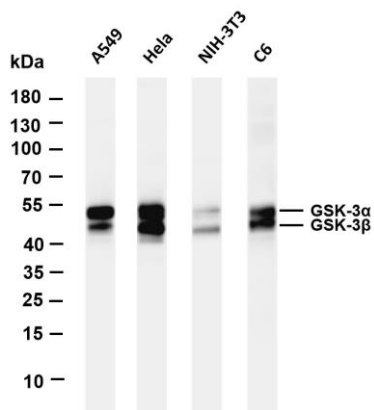
### Target Information

Gene name	GSK3A/GSK3B
Protein Name	Glycogen synthase kinase-3 alpha/beta

Organism	Gene ID	UniProt ID
Human	2931	P49840; P49841
Rat	50686; 84027	P18265; P18266

Cellular Localization	Cytoplasm
Tissue specificity	Brain, Eye, Foreskin, Lung, Pancreas, Platelet, Testis,

## Validation Data



Various whole cell lysates were separated by 4-20% SDS-PAGE, and the membrane was blotted with anti-GSK3  $\alpha/\beta$  antibody. The HRP-conjugated Goat anti-Rabbit IgG(H + L) antibody was used to detect the antibody.

Lane 1: A549

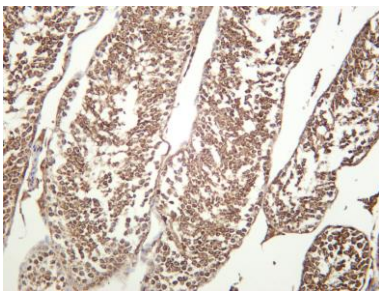
Lane 2: HeLa

Lane 3: NIH-3T3

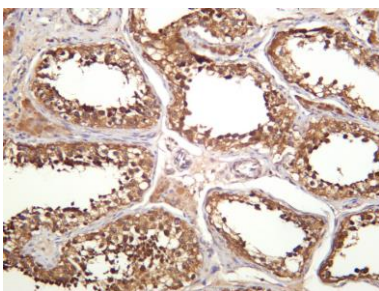
Lane 4: C6

Predicted band size: 51kDa, 47kDa

Observed band size: 51kDa, 47kDa



Mouse testis was stained with anti-GSK3  $\alpha/\beta$  rabbit antibody



Human testis was stained with anti-GSK3  $\alpha/\beta$  rabbit antibody

For Research Use Only