

Lck Rabbit mAb (AR1221)

Key Features

Host Species:	Rabbit
Reactivity:	Human, Mouse, Rat
Applications:	WB, IHC, IF, IP, ELISA
Isotype:	IgG, Kappa
MW:	58kD (Calculated) 58kD (Observed)

Recommended Dilution Ratios

IHC:	1:200-1000
WB:	1:500-2000
IF:	1:200-1000
ELISA:	1:5000-20000
IP:	1:50-200

Storage

-15°C to -25°C/1 year (Do not lower than -25°C)

Basic Information

Clonality	Monoclonal
-----------	------------

Immunogen Information

Specificity	Endogenous
-------------	------------

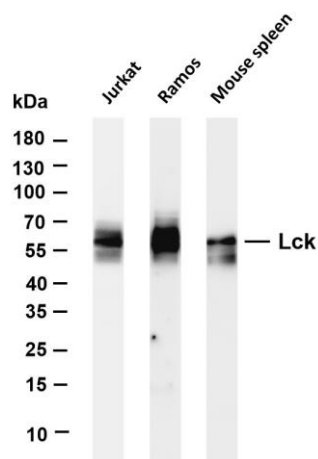
Target Information

Gene name	LCK
Protein Name	Tyrosine-protein kinase Lck

Organism	Gene ID	UniProt ID
Human	3932	P06239
Mouse	16818	P06240
Rat	313050	Q01621

Cellular Localization	Cytoplasm, Membrane
Tissue specificity	Expressed specifically in lymphoid cells.

Validation Data



Various whole cell lysates were separated by 4-20% SDS-PAGE, and the membrane was blotted with anti-Lck antibody. The HRP-conjugated Goat anti-Rabbit IgG(H + L) antibody was used to detect the antibody.

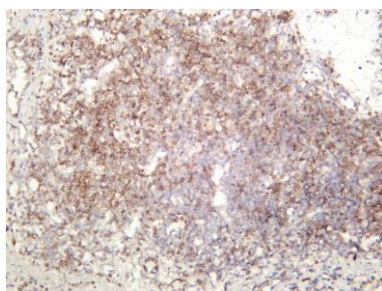
Lane 1: Jurkat

Lane 2: Ramos

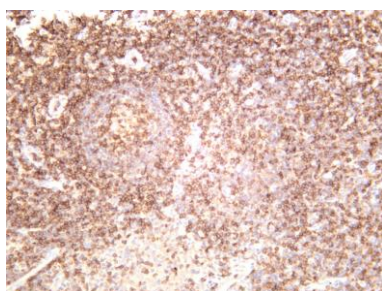
Lane 3: Mouse spleen

Predicted band size: 58kDa

Observed band size: 58kDa



Rat colon was stained with anti-Lck rabbit antibody



Human tonsil was stained with anti-Lck rabbit antibody

For Research Use Only