

## MIF Rabbit mAb (AR1222)

### Key Features

Host Species:	Rabbit
Reactivity:	Human, Mouse, Rat
Applications:	WB, IHC, IF, IP, ELISA
Isotype:	IgG, Kappa
MW:	12kD (Calculated) 12kD (Observed)

### Recommended Dilution Ratios

IHC:	1:3000-10000
WB:	1:1000-5000
IF:	1:200-1000
ELISA:	1:5000-20000
IP:	1:50-200

### Storage

-15°C to -25°C/1 year (Do not lower than -25°C)

### Basic Information

Clonality	Monoclonal
-----------	------------

### Immunogen Information

Specificity	Endogenous
-------------	------------

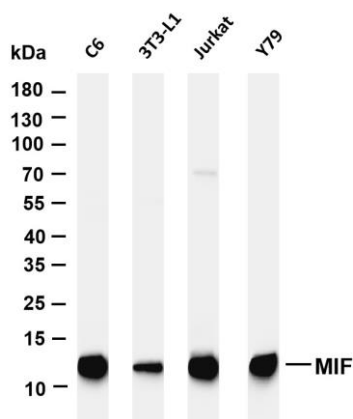
### Target Information

Gene name	MIF
Protein Name	Macrophage migration inhibitory factor

Organism	Gene ID	UniProt ID
Human	4282	P14174
Mouse	17319	P34884
Rat	81683	P30904

Cellular Localization	Cytoplasm
Tissue specificity	Brain, Lens, Liver, Lung, Platelet, Skin

## Validation Data



Various whole cell lysates were separated by 4-20% SDS-PAGE, and the membrane was blotted with anti-MIF antibody. The HRP-conjugated Goat anti-Rabbit IgG(H + L) antibody was used to detect the antibody.

Lane 1: C6

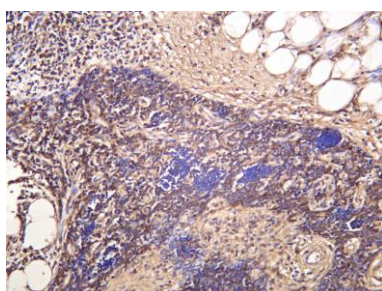
Lane 2: 3T3-L1

Lane 3: Jurkat

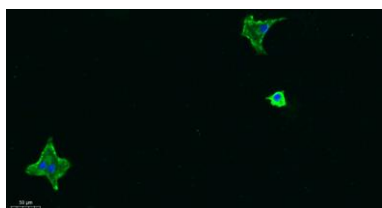
Lane 4: Y79

Predicted band size: 12kDa

Observed band size: 12kDa

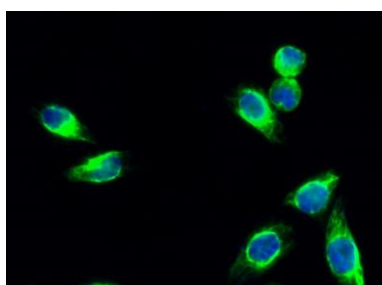


Human thymus was stained with anti-MIF rabbit antibody



Immunofluorescence analysis of A549.

1. Primary Antibody was diluted at 1:200(4°C overnight).
2. Goat Anti Rabbit IgG (H&L) - Alexa Fluor 488 Secondary antibody was diluted at 1:1000(room temperature, 50min).
3. DAPI (blue) 10min.



Immunofluorescence analysis of HeLa cell.

1. MIF Antibody(green) was diluted at 1:200(4° overnight).
2. Goat Anti Rabbit Alexa Fluor 488 was diluted at 1:1000(room temperature, 50min).
3. DAPI (blue) 10min.

For Research Use Only