

CD20 Rabbit mAb (AR1223)

Key Features

Host Species:	Rabbit
Reactivity:	Human
Applications:	WB,IHC,IF,IP,ELISA
Isotype:	IgG,Kappa
MW:	33kD (Calculated) 36kD (Observed)

Recommended Dilution Ratios

IHC:	1:500-5000
WB:	1:1000-5000
IF:	1:200-1000
ELISA:	1:5000-20000
IP:	1:50-200

Storage

-15°C to -25°C/1 year (Do not lower than -25°C)

Basic Information

Clonality	Monoclonal
-----------	------------

Immunogen Information

Specificity	Endogenous
-------------	------------

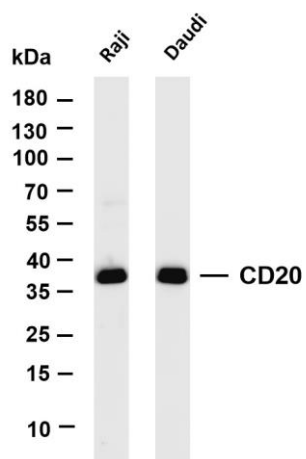
Target Information

Gene name	MS4A1 CD20
Protein Name	CD20

Organism	Gene ID	UniProt ID
Human	931	P11836
Mouse	12482	P19437
Rat	309217	D4A4Y3

Cellular Localization	Membrane
Tissue specificity	Expressed on B-cells.

Validation Data



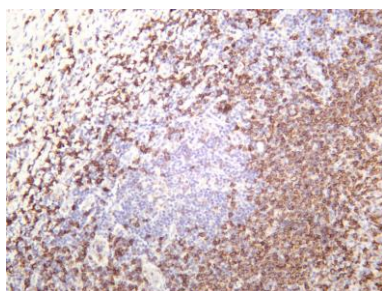
Various whole cell lysates were separated by 4-20% SDS-PAGE, and the membrane was blotted with anti-CD20 antibody. The HRP-conjugated Goat anti-Rabbit IgG(H + L) antibody was used to detect the antibody.

Lane 1: Raji

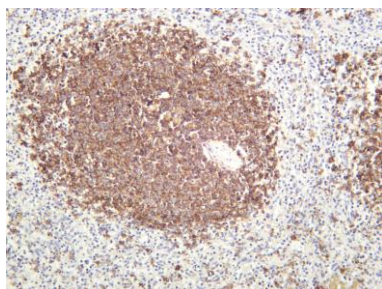
Lane 2: Daudi

Predicted band size: 33kDa

Observed band size: 36kDa



Human tonsil was stained with anti-CD20 rabbit antibody



Human spleen was stained with anti-CD20 rabbit antibody

For Research Use Only