

Histone H2B Rabbit mAb (AR1224)

Key Features

Host Species:	Rabbit
Reactivity:	Human,Mouse,Rat
Applications:	WB,IHC,IF,IP,ELISA
Isotype:	IgG,Kappa
MW:	14kD (Calculated) 14kD (Observed)

Recommended Dilution Ratios

IHC:	1:20000-50000
WB:	1:1000-5000
IF:	1:200-1000
ELISA:	1:5000-20000
IP:	1:50-200

Storage

-15°C to -25°C/1 year (Do not lower than -25°C)

Basic Information

Clonality	Monoclonal
-----------	------------

Immunogen Information

Specificity	Endogenous
-------------	------------

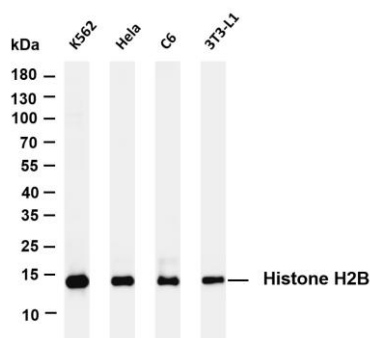
Target Information

Gene name	HIST1H2BC H2BFL; HIST1H2BE H2BFH; HIST1H2BF H2BFG; HIST1H2BG H2BFA; HIST1H2BI; H2BFK
Protein Name	Histone H2B (Acetyl Lys35)

Organism	Gene ID	UniProt ID
Human	3017	P62807; P58876; Q93079; O60814; Q99880; Q99879; Q99877; Q5QNW6; P57053;
Mouse	319179	Q6ZWY9

Cellular Localization

Validation Data



Nucleus

Various whole cell lysates were separated by 4-20% SDS-PAGE, and the membrane was blotted with anti-Histone H2B antibody. The HRP-conjugated Goat anti-Rabbit IgG(H + L) antibody was used to detect the antibody.

Lane1: K562

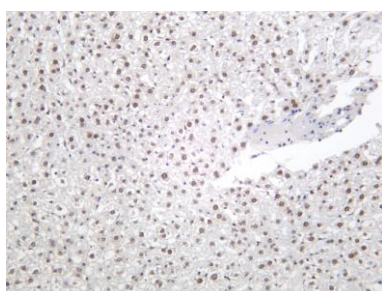
Lane 2: HeLa

Lane 3: C6

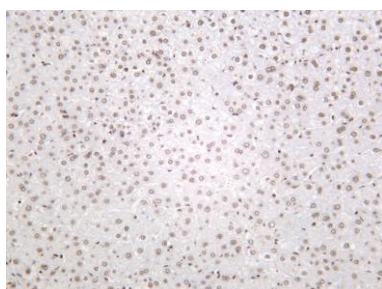
Lane 4: 3T3-L1

Predicted band size: 14kDa

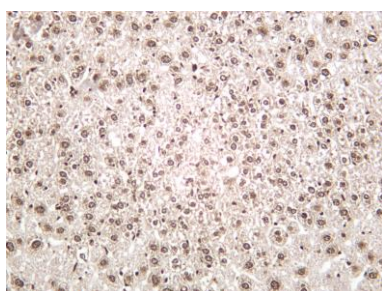
Observed band size: 14kDa



Rat liver was stained with anti-Histone H2B rabbit antibody



Human liver was stained with anti-Histone H2B rabbit antibody



Mouse liver was stained with anti-Histone H2B rabbit antibody

For Research Use Only