

PP2A α/β Rabbit mAb (AR1225)

Key Features

Host Species:	Rabbit
Reactivity:	Human, Mouse, Rat
Applications:	WB, IHC, IF, IP, ELISA
Isotype:	IgG, Kappa
MW:	36kD (Calculated) 36kD (Observed)

Recommended Dilution Ratios

IHC:	1:200-1000
WB:	1:2000-10000
IF:	1:200-1000
ELISA:	1:5000-20000
IP:	1:50-200

Storage

-15°C to -25°C/1 year (Do not lower than -25°C)

Basic Information

Clonality	Monoclonal
-----------	------------

Immunogen Information

Specificity	Endogenous
-------------	------------

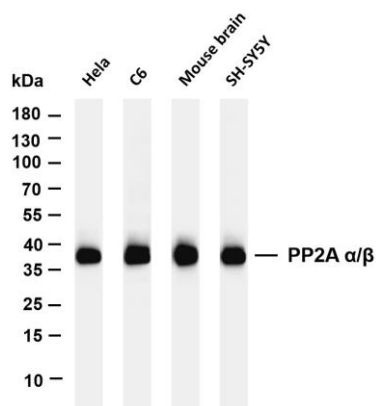
Target Information

Gene name	PPP2CA; PPP2CB
Protein Name	Serine/threonine-protein phosphatase 2A catalytic subunit alpha isoform; PP2A-beta; PP2A alpha; Replication protein C; RP-C

Organism	Gene ID	UniProt ID
Human	5515; 5516	P67775; P62714
Mouse	19052; 19053	P63330; P62715
Rat	24672; 24673	P63331; P62716

Cellular Localization	Cytoplasm
Tissue specificity	Fibroblast, Liver, Lung, Placenta, Testis, Uterus, baseline

Validation Data



Various whole cell lysates were separated by 4-20% SDS-PAGE, and the membrane was blotted with anti-PP2A α/β antibody. The HRP conjugated Goat anti-Rabbit IgG(H + L) antibody was used to detect the antibody.

Lane 1: HeLa

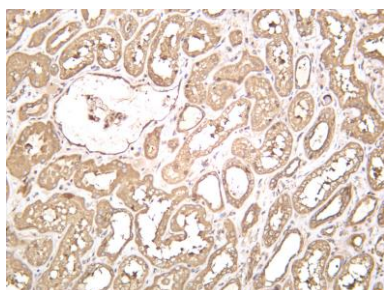
Lane 2: C6

Lane 3: Mouse brain

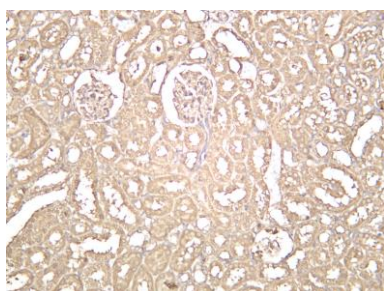
Lane 4: SH-SY5Y

Predicted band size: 36kDa

Observed band size: 36kDa



Human kidney was stained with anti-PP2A α/β rabbit antibody



Rat kidney was stained with anti-PP2A α/β rabbit antibody

For Research Use Only