

Ubiquitin K48 Rabbit mAb (AR1227)

Key Features

Host Species:	Rabbit
Reactivity:	Human,Mouse,Rat
Applications:	WB,IHC,IF,IP,ELISA
Isotype:	IgG,Kappa
MW:	15-91kD (Calculated) 13-250kD (Observed)

Recommended Dilution Ratios

IHC:	1:200-1000
WB:	1:500-2000
IF:	1:200-1000
ELISA:	1:5000-20000
IP:	1:50-200

Storage

-15°C to -25°C/1 year (Do not lower than -25°C)

Basic Information

Clonality	Monoclonal
-----------	------------

Immunogen Information

Specificity	Endogenous
-------------	------------

Target Information

Gene name	UBA52/RPS27A/UBB/UBC
Protein Name	Ubiquitin

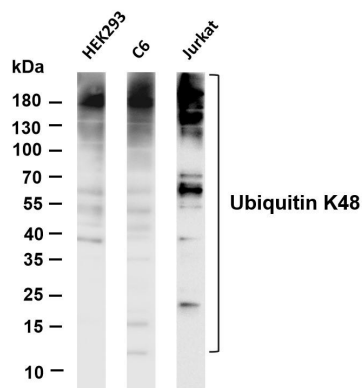
Organism	Gene ID	UniProt ID
Human	7311	P0CG47; P0CG48; P62979; P62987
Mouse	22187; 22190; 78294; 22186	
Rat	192255; 50522; 100912032; 64156	P0CG51; Q63429; P62982; P62986

Cellular Localization	Cytoplasm
-----------------------	-----------

Tissue specificity

Brain, Epithelium, Fetal brain cortex, Liver, Lung, Lung adenocarcinoma, Lung cancer, Lymphocyte

Validation Data



Various whole cell lysates were separated by 4-20% SDS-PAGE, and the membrane was blotted with anti-Ubiquitin K48 antibody. The HRP conjugated Goat anti-Rabbit IgG(H + L) antibody was used to detect the antibody.

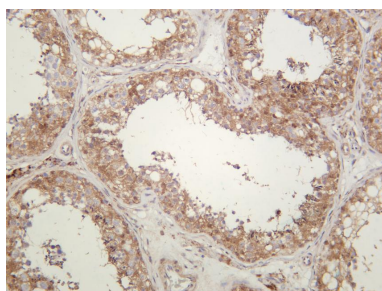
Lane 1: HEK293

Lane 2: C6

Lane 3: Jurkat

Predicted band size: 15-91kDa

Observed band size: 13-250kDa



Human testis was stained with anti-Ubiquitin K48 rabbit antibody

For Research Use Only