

MYL2 Rabbit mAb (AR1228)

Key Features

Host Species:	Rabbit
Reactivity:	Human, Mouse, Rat
Applications:	WB, IHC, IF, IP, ELISA
Isotype:	IgG, Kappa
MW:	19kD (Calculated) 19kD (Observed)

Recommended Dilution Ratios

IHC:	1:200-1000
WB:	1:2000-10000
IF:	1:200-1000
ELISA:	1:5000-20000
IP:	1:50-200

Storage

-15°C to -25°C/1 year (Do not lower than -25°C)

Basic Information

Clonality	Monoclonal
-----------	------------

Immunogen Information

Specificity	Endogenous
-------------	------------

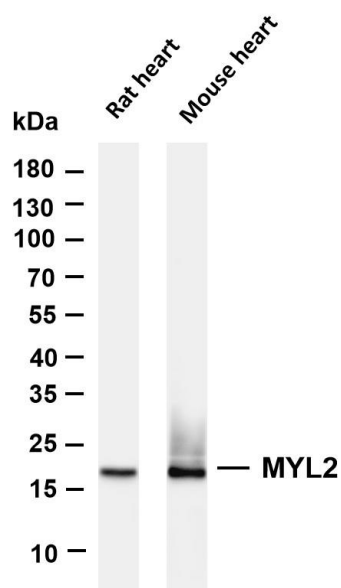
Target Information

Gene name	MYL2
Protein Name	MYL2

Organism	Gene ID	UniProt ID
Human	4633	P10916
Mouse	17906	P51667

Cellular Localization	Cytoplasm
Tissue specificity	Highly expressed in type I muscle fibers.

Validation Data



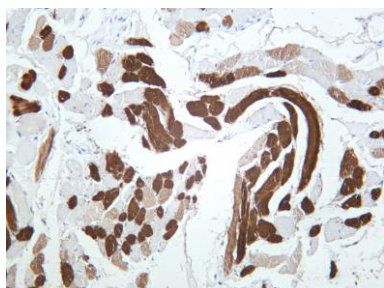
Various whole cell lysates were separated by 4-20% SDS-PAGE, and the membrane was blotted with anti-MYL2 antibody. The HRP conjugated Goat anti-Rabbit IgG(H + L) antibody was used to detect the antibody.

Lane 1: Rat heart

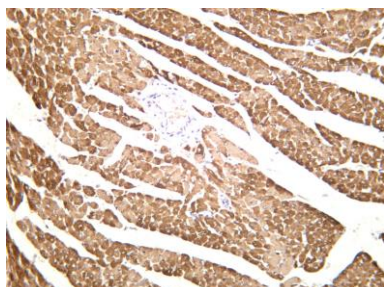
Lane 2: Mouse heart

Predicted band size: 19kDa

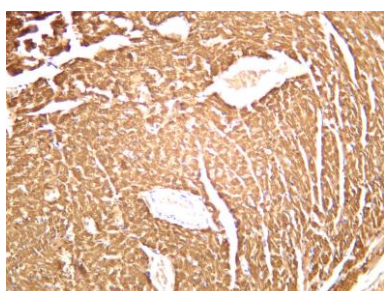
Observed band size: 19kDa



Human skeletal muscle was stained with anti-MYL2 rabbit antibody



Rat cardiac muscle was stained with anti-MYL2 rabbit antibody



Mouse cardiac muscle was stained with anti-MYL2 rabbit antibody