

YTHDF2 Rabbit mAb (AR1229)

Key Features

Host Species:	Rabbit
Reactivity:	Human, Mouse, Rat
Applications:	WB, IHC, IF, IP, ELISA
Isotype:	IgG, Kappa
MW:	62kD (Calculated) 62kD (Observed)

Recommended Dilution Ratios

IHC:	1:200-1000
WB:	1:1000-5000
IF:	1:200-1000
ELISA:	1:5000-20000
IP:	1:50-200

Storage

-15°C to -25°C/1 year (Do not lower than -25°C)

Basic Information

Clonality	Monoclonal
-----------	------------

Immunogen Information

Specificity	Endogenous
-------------	------------

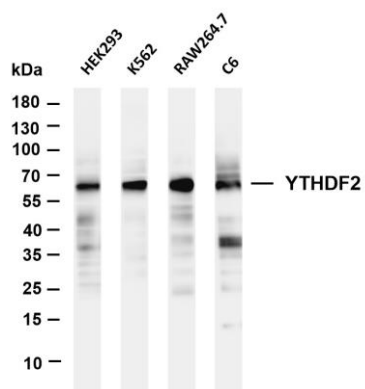
Target Information

Gene name	YTHDF2 HGRG8
Protein Name	YTH domain family protein 2 (CLL-associated antigen KW-14) (High-glucose-regulated protein 8) (Renal carcinoma antigen NY-REN-2)

Organism	Gene ID	UniProt ID
Human	51441	Q9Y5A9

Cellular Localization	Cytoplasm, Nucleus
Tissue specificity	Highly expressed in induced pluripotent stem cells (iPSCs) and down-regulated during neural differentiation.

Validation Data



Various whole cell lysates were separated by 4-20% SDS-PAGE, and the membrane was blotted with anti-YTHDF2 antibody. The HRP conjugated Goat anti-Rabbit IgG(H + L) antibody was used to detect the antibody.

Lane 1: HEK293

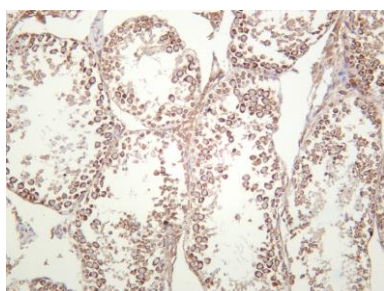
Lane 2: K562

Lane 3: RAW264.7

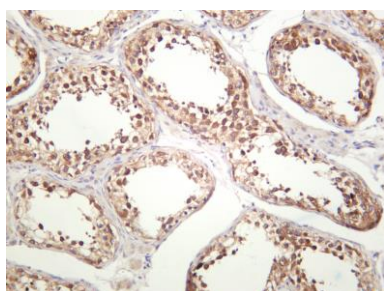
Lane 4: C6

Predicted band size: 62kDa

Observed band size: 62kDa



Mouse testis was stained with anti-YTHDF2 antibody



Human testis was stained with anti-YTHDF2 rabbit antibody

For Research Use Only