

DDX5 Rabbit mAb (AR1232)

Key Features

Host Species:	Rabbit
Reactivity:	Human, Mouse, Rat
Applications:	WB, IHC, IF, IP, ELISA
Isotype:	IgG, Kappa
MW:	69kD (Calculated) 69kD (Observed)

Recommended Dilution Ratios

IHC:	1:1000-5000
WB:	1:1000-5000
IF:	1:200-1000
ELISA:	1:5000-20000
IP:	1:50-200

Storage

-15°C to -25°C/1 year (Do not lower than -25°C)

Basic Information

Clonality	Monoclonal
-----------	------------

Immunogen Information

Specificity	Endogenous
-------------	------------

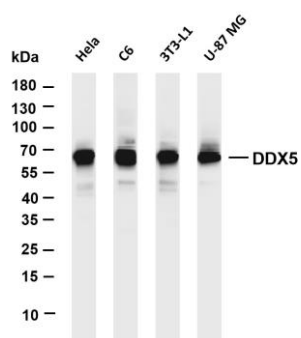
Target Information

Gene name	DDX5
Protein Name	Probable ATP-dependent RNA helicase DDX5

Organism	Gene ID	UniProt ID
Human	1655	P17844
Mouse		Q61656

Cellular Localization	Nucleus
Tissue specificity	Aorta endothelial cell, Epithelium, Human esophagus tumor, Muscle

Validation Data



Various whole cell lysates were separated by 4-20% SDS-PAGE, and the membrane was blotted with anti-DDX5 antibody. The HRP conjugated Goat anti-Rabbit IgG(H + L) antibody was used to detect the antibody.

Lane 1: HeLa

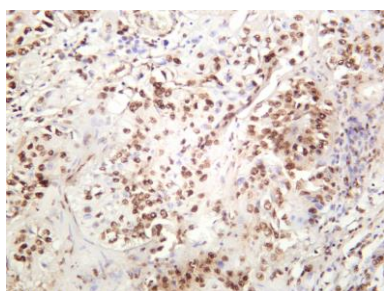
Lane 2: C6

Lane 3: 3T3-L1

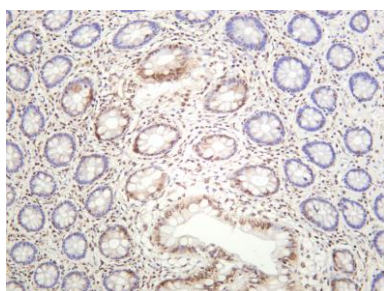
Lane 4: U-87 MG

Predicted band size: 69kDa

Observed band size: 69kDa



Human bladder carcinoma was stained with anti-DDX5 rabbit antibody



Human colon was stained with anti-DDX5 rabbit antibody



Mouse testicles was stained with anti-DDX5 Rabbit antibody

For Research Use Only