

MEK1/2 Rabbit mAb (AR1234)

Key Features

Host Species:	Rabbit
Reactivity:	Human,Mouse,Rat
Applications:	WB,IHC,IF,IP,ELISA
Isotype:	IgG,Kappa
MW:	44kD (Calculated) 44kD (Observed)

Recommended Dilution Ratios

IHC:	1:500-2000
WB:	1:1000-5000
IF:	1:200-1000
ELISA:	1:5000-20000
IP:	1:50-200

Storage

-15°C to -25°C/1 year (Do not lower than -25°C)

Basic Information

Clonality	Monoclonal
-----------	------------

Immunogen Information

Specificity	Endogenous
-------------	------------

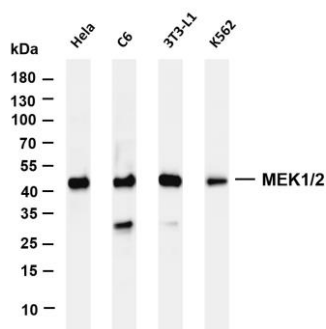
Target Information

Gene name	MAP2K1/MAP2K2
Protein Name	Dual specificity mitogen-activated protein kinase kinase 1/2

Organism	Gene ID	UniProt ID
Human	5604; 5605	Q02750; P36507
Mouse	26395; 26396	
Rat	170851; 58960	Q01986; P36506

Cellular Localization	Cytoplasm
Tissue specificity	Widely expressed, with extremely low levels in brain.

Validation Data



Various whole cell lysates were separated by 4-20% SDS-PAGE, and the membrane was blotted with anti- MEK1/2 antibody. The HRP conjugated Goat anti-Rabbit IgG(H + L) antibody was used to detect the antibody.

Lane 1: HeLa

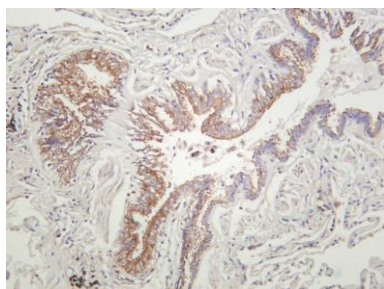
Lane 2: C6

Lane 3: 3T3-L1

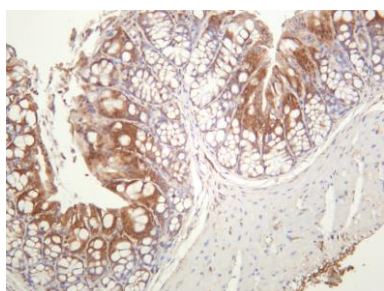
Lane 4: K562

Predicted band size: 44kDa

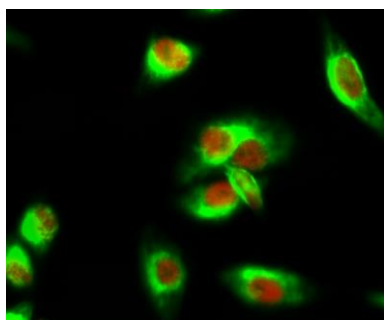
Observed band size: 44kDa



Human lung carcinoma was stained with anti-MEK1/2 rabbit antibody



Mouse colon was stained with anti-MEK1/2 rabbit antibody



Immunofluorescence analysis of HeLa cell.

1. MEK-1/2 Antibody(red) was diluted at 1:200(4° overnight). CYCS Monoclonal Antibody(4B10)(green) was diluted at 1:200(4° overnight).

2. Goat Anti Rabbit Alexa Fluor 594 was diluted at 1:1000(room temperature, 50min). Goat Anti Mouse Alexa Fluor 488 was diluted at 1:1000(room temperature, 50min).

For Research Use Only