

CD36 Rabbit mAb(AR1235)

Key Features

Host Species:	Rabbit
Reactivity:	Human,Mouse,Rat
Applications:	WB,IHC,IF,IP,ELISA
Isotype:	IgG,Kappa
MW:	53kD (Calculated) 90kD (Observed)

Recommended Dilution Ratios

IHC:	1:1000-4000
WB:	1:1000-5000
IF:	1:200-1000
ELISA:	1:5000-20000
IP:	1:50-200

Storage

-15°C to -25°C/1 year (Do not lower than -25°C)

Basic Information

Clonality	Monoclonal
-----------	------------

Immunogen Information

Specificity	Endogenous
-------------	------------

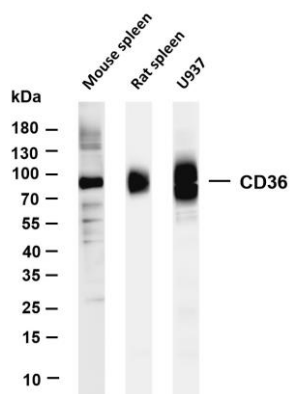
Target Information

Gene name	CD36
Protein Name	Platelet glycoprotein 4

Organism	Gene ID	UniProt ID
Human	948	P16671
Mouse	12491	Q08857
Rat		Q07969

Cellular Localization	Membrane
Tissue specificity	Adipocyte,Liver,Mammary gland,Milk,Placenta,Platelet,Skeletal muscle

Validation Data



Various whole cell lysates were separated by 4-20% SDS-PAGE, and the membrane was blotted with anti-CD36 antibody.

The HRPconjugated Goat anti-Rabbit IgG(H + L) antibody was used to detect the antibody.

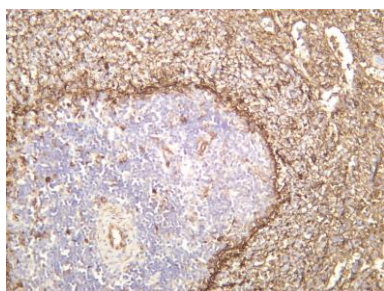
Lane 1: Mouse spleen

Lane 2: Rat spleen

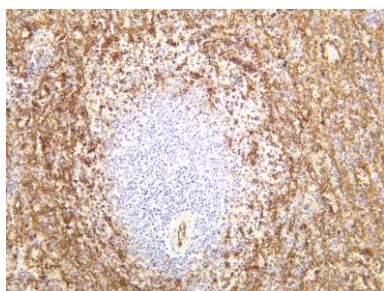
Lane 3: U937

Predicted band size: 53kDa

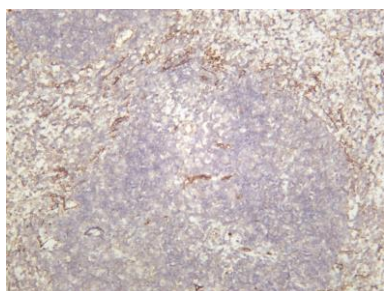
Observed band size: 90kDa



Rat spleen was stained with anti-CD36 rabbit antibody



Human spleen was stained with anti-CD36 rabbit antibody



Mouse spleen was stained with anti-CD36 rabbit antibody

For Research Use Only