

p38 Rabbit mAb(AR1237)

Key Features

Host Species:	Rabbit
Reactivity:	Human,Mouse,Rat
Applications:	WB,IHC,IF,IP,ELISA
Isotype:	IgG,Kappa
MW:	41kD (Calculated) 41kD (Observed)

Recommended Dilution Ratios

IHC:	1:50-300
WB:	1:1000-5000
IF:	1:200-1000
ELISA:	1:5000-20000
IP:	1:50-200

Storage

-15°C to -25°C/1 year (Do not lower than -25°C)

Basic Information

Clonality	Monoclonal
-----------	------------

Immunogen Information

Specificity	Endogenous
-------------	------------

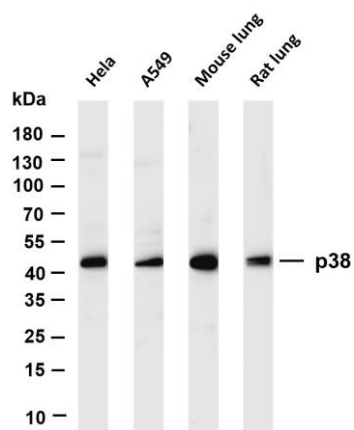
Target Information

Gene name	MAPK14 CSBP CSBP1 CSBP2 CSPB1 MXI2 SAPK2A
Protein Name	p38

Organism	Gene ID	UniProt ID
Human	1432	Q16539
Mouse	26416	P47811
Rat		P70618

Cellular Localization	Cytoplasm, Nucleus
Tissue specificity	Brain, heart, placenta, pancreas and skeletal muscle. Expressed to a lesser extent in lung, liver and kidney.

Validation Data



Various whole cell lysates were separated by 4-20% SDS-PAGE, and the membrane was blotted with anti-p38 antibody.

The HRPconjugated Goat anti-Rabbit IgG(H + L) antibody was used to detect the antibody.

Lane 1: HeLa

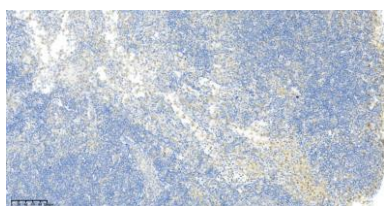
Lane 2: A549

Lane 3: Mouse lung

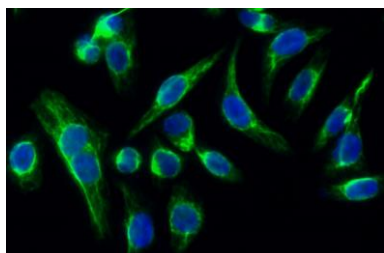
Lane 4: Rat lung

Predicted band size: 41kDa

Observed band size: 41kDa



Rat Mesenteric lymph nodes was stained with anti-p38 Rabbit antibody



Immunofluorescence analysis of HeLa cell. 1,p38 Antibody(green) was diluted at 1:200(4° overnight). 2, Goat Anti Rabbit Alexa Fluor 488 Catalog:RS3211 was diluted at 1:1000(room temperature, 50min). 3 DAPI(blue) 10min

For Research Use Only