

## Bag3 Rabbit mAb(AR1238)

### Key Features

Host Species:	Rabbit
Reactivity:	Human,Mouse,Rat
Applications:	WB,IHC,IF,IP,ELISA
Isotype:	IgG,Kappa
MW:	62kD (Calculated) 80kD (Observed)

### Recommended Dilution Ratios

IHC:	1:200-1000
WB:	1:1000-5000
IF:	1:200-1000
ELISA:	1:5000-20000
IP:	1:50-200

### Storage

-15°C to -25°C/1 year (Do not lower than -25°C)

### Basic Information

Clonality	Monoclonal
-----------	------------

### Immunogen Information

Specificity	Endogenous
-------------	------------

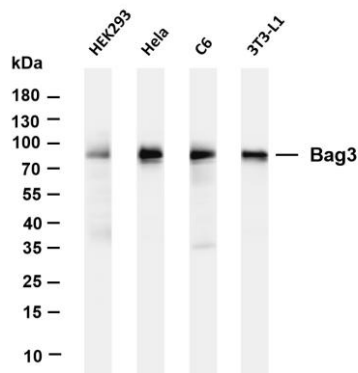
### Target Information

Gene name	BAG3
Protein Name	BAG family molecular chaperone regulator 3

Organism	Gene ID	UniProt ID
Human	9531	O95817
Mouse	29810	Q9JLV1

Cellular Localization	Cytoplasm, Nucleus
Tissue specificity	Brain,Epithelium,Liver,Lung,Placenta,T-cell,Testis,Tongue

## Validation Data



Various whole cell lysates were separated by 4-20% SDS-PAGE, and the membrane was blotted with anti-Bag3 antibody. The HRPconjugated Goat anti-Rabbit IgG(H + L) antibody was used to detect the antibody.

Lane 1: HEK293

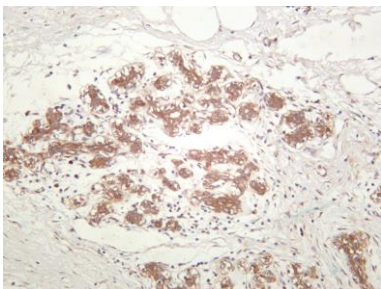
Lane 2: Hela

Lane 3: C6

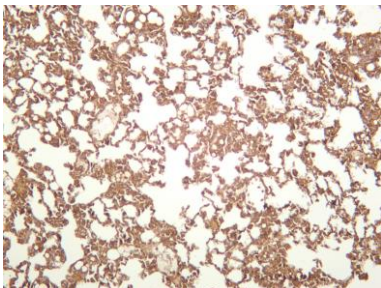
Lane 4: 3T3-L1

Predicted band size: 62kDa

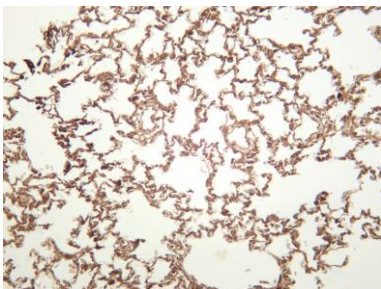
Observed band size: 80kDa



Human breast carcinoma was stained with anti-Bag3 rabbit antibody



Mouse lung was stained with anti-Bag3 rabbit antibody



Rat lung was stained with anti-Bag3 rabbit antibody

For Research Use Only