

CD44 Rabbit mAb(AR1240)

Key Features

Host Species:	Rabbit
Reactivity:	Human,Mouse,Rat
Applications:	WB,IHC,IF,IP,ELISA
Isotype:	IgG,Kappa
MW:	81kD (Calculated) 81kD (Observed)

Recommended Dilution Ratios

IHC:	1:20000-50000
WB:	1:1000-5000
IF:	1:200-1000
ELISA:	1:5000-20000
IP:	1:50-200

Storage

-15°C to -25°C/1 year (Do not lower than -25°C)

Basic Information

Clonality	Monoclonal
-----------	------------

Immunogen Information

Specificity	Endogenous
-------------	------------

Target Information

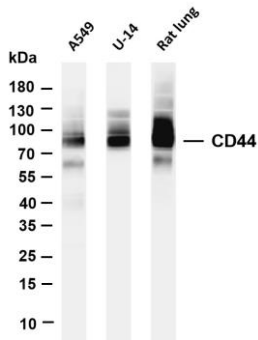
Gene name	CD44 LHR MDU2 MDU3 MIC4
Protein Name	CD44

Organism	Gene ID	UniProt ID
Human	960	P16070
Mouse	12505	P15379
Rat		P26051

Cellular Localization	Membrane
Tissue specificity	Isoform 10 (epithelial isoform) is expressed by cells of epithelium and highly expressed by carcinomas. Expression is repressed in

neuroblastoma cells.

Validation Data



Various whole cell lysates were separated by 4-20% SDS-PAGE, and the membrane was blotted with anti-CD44 antibody. The HRPconjugated Goat anti-Rabbit IgG(H + L) antibody was used to detect the antibody.

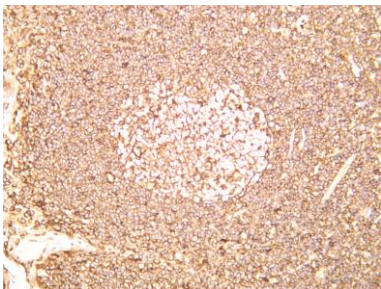
Lane 1: A549

Lane 2: U-14

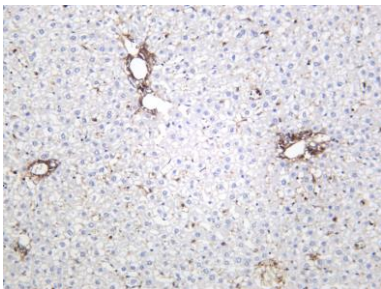
Lane 3: Rat lung

Predicted band size: 81kDa

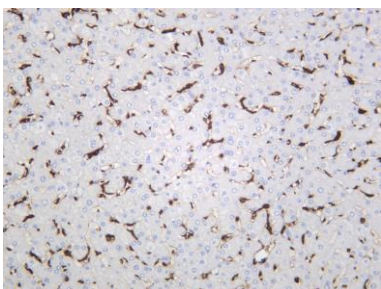
Observed band size: 81kDa



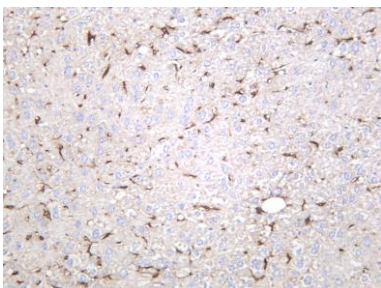
Human tonsil was stained with anti-CD44 rabbit antibody



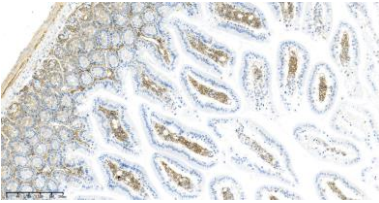
Rat liver was stained with anti-CD44 rabbit antibody



Human liver was stained with anti-CD44 rabbit antibody



Mouse liver was stained with anti-CD44 rabbit antibody



Mouse ileum was stained with anti-CD44 Rabbit antibody

For Research Use Only