

CD21 Rabbit mAb (AR1241)

Key Features

Host Species:	Rabbit
Reactivity:	Human, Mouse, Rat
Applications:	WB, IHC, IF, IP, ELISA
Isotype:	IgG, Kappa
MW:	113kD (Calculated) 155kD (Observed)

Recommended Dilution Ratios

IHC:	1:1000-4000
WB:	1:1000-5000
IF:	1:200-1000
ELISA:	1:5000-20000
IP:	1:50-200

Storage

-15°C to -25°C/1 year (Do not lower than -25°C)

Basic Information

Clonality	Monoclonal
-----------	------------

Immunogen Information

Specificity	Endogenous
-------------	------------

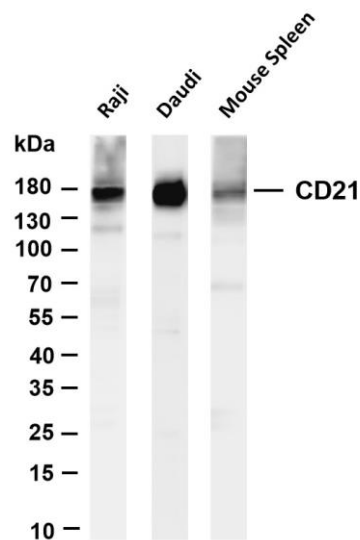
Target Information

Gene name	CR2
Protein Name	Complement receptor type 2

Organism	Gene ID	UniProt ID
Human	1380	P20023
Mouse		P19070

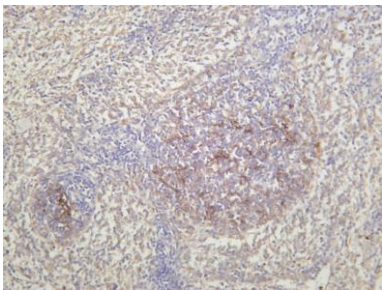
Cellular Localization	Membrane
Tissue specificity	Mature B-lymphocytes, T-lymphocytes, pharyngeal epithelial cells, astrocytes and follicular dendritic cells of the spleen.

Validation Data

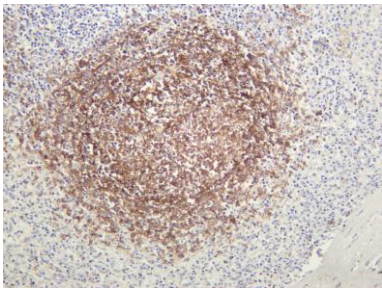


Various whole cell lysates were separated by 4-20% SDS-PAGE, and the membrane was blotted with anti-CD21 antibody. The HRP conjugated Goat anti-Rabbit IgG(H + L) antibody was used to detect the antibody.

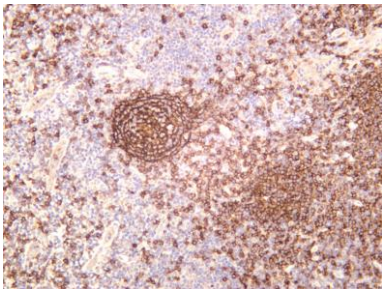
Lane 1: Raji
Lane 2: Daudi
Lane 3: Mouse Spleen
Predicted band size: 113kDa
Observed band size: 155kDa



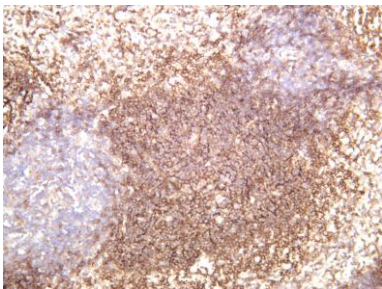
Rat spleen was stained with anti-CD21 rabbit antibody



Human spleen was stained with anti-CD21 rabbit antibody



Human tonsil was stained with anti-CD21 rabbit antibody



Mouse spleen was stained with anti-CD21 rabbit antibody