

Osteopontin Rabbit mAb (AR1242)

Key Features

Host Species:	Rabbit
Reactivity:	Human,Mouse,Rat
Applications:	WB,IHC,IF,IP,ELISA
Isotype:	IgG,Kappa
MW:	35kD (Calculated) 55,65kD (Observed)

Recommended Dilution Ratios

IHC:	1:200-1000
WB:	1:2000-10000
IF:	1:200-1000
ELISA:	1:5000-20000
IP:	1:50-200

Storage

-15°C to -25°C/1 year (Do not lower than -25°C)

Basic Information

Clonality	Monoclonal
-----------	------------

Immunogen Information

Specificity	Endogenous
-------------	------------

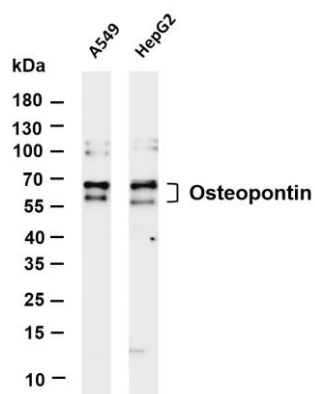
Target Information

Gene name	SPP1
Protein Name	Osteopontin

Organism	Gene ID	UniProt ID
Human	6696	P10451
Mouse	20750	P10923
Rat	25353	P08721

Cellular Localization	Secreted
Tissue specificity	Bone. Found in plasma.

Validation Data



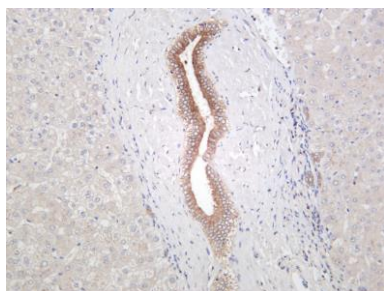
Various whole cell lysates were separated by 4-20% SDS-PAGE, and the membrane was blotted with anti-Osteopontin antibody. The HRP conjugated Goat anti-Rabbit IgG(H + L) antibody was used to detect the antibody.

Lane 1: A549

Lane 2: HepG2

Predicted band size: 35kDa

Observed band size: 55 kDa ,65kDa



Human liver was stained with anti-Osteopontin rabbit antibody

For Research Use Only