

Keap1 Rabbit mAb (AR1244)

Key Features

Host Species:	Rabbit
Reactivity:	Human, Mouse, Rat
Applications:	WB, IHC, IF, IP, ELISA
Isotype:	IgG, Kappa
MW:	70kD (Calculated) 60-70kD (Observed)

Recommended Dilution Ratios

IHC:	1:200-1000
WB:	1:2000-10000
IF:	1:200-1000
ELISA:	1:5000-20000
IP:	1:50-200

Storage

-15°C to -25°C/1 year (Do not lower than -25°C)

Basic Information

Clonality	Monoclonal
-----------	------------

Immunogen Information

Specificity	Endogenous
-------------	------------

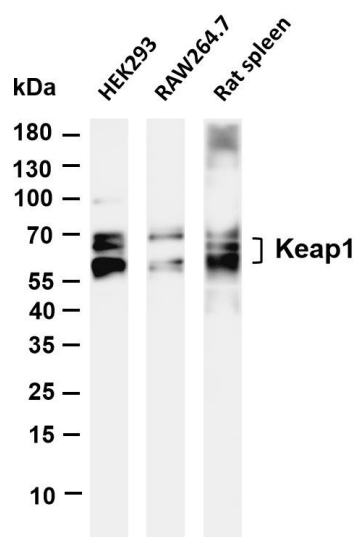
Target Information

Gene name	KEAP1 INRF2 KIAA0132 KLHL19
Protein Name	Kelch-like ECH-associated protein 1 (Cytosolic inhibitor of Nrf2) (INrf2) (Kelch-like protein 19)

Organism	Gene ID	UniProt ID
Human	9817	Q14145
Mouse	50868	Q9Z2X8
Rat	117519	P57790

Cellular Localization	Cytoplasm, Nucleus
Tissue specificity	Broadly expressed, with highest levels in skeletal muscle.

Validation Data



Various whole cell lysates were separated by 4-20% SDS-PAGE, and the membrane was blotted with anti-Keap1 antibody. The HRP conjugated Goat anti-Rabbit IgG(H + L) antibody was used to detect the antibody.

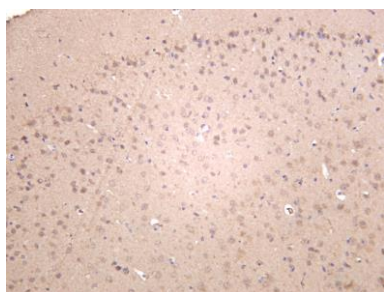
Lane 1: HEK293

Lane 2: RAW264.7

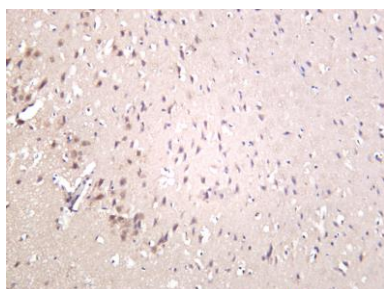
Lane 3: Rat spleen

Predicted band size: 70kDa

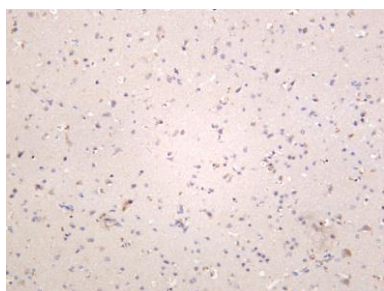
Observed band size: 60-70kDa



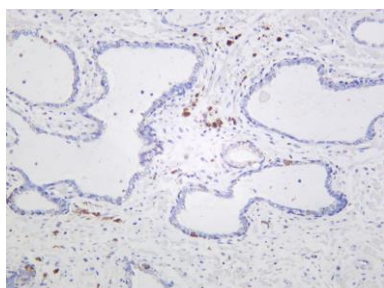
Mouse brain was stained with anti-Keap1 rabbit antibody



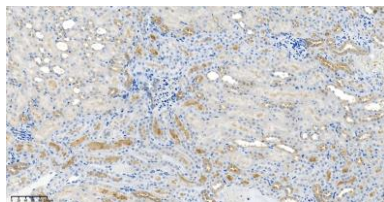
Rat brain was stained with anti-Keap1 rabbit antibody



Human brain was stained with anti-Keap1 rabbit antibody



Human prostate was stained with anti-Keap1 rabbit antibody



Mouse kidney was stained with anti-Keap1 Rabbit antibody

For Research Use Only