

## ACSL4 Rabbit mAb (AR1247)

### Key Features

Host Species:	Rabbit
Reactivity:	Human, Mouse, Rat
Applications:	WB, IHC, IF, IP, ELISA
Isotype:	IgG, Kappa
MW:	79kD (Calculated) 79kD (Observed)

### Recommended Dilution Ratios

IHC:	1:200-2000
WB:	1:1000-5000
IF:	1:200-1000
ELISA:	1:5000-20000
IP:	1:50-200

### Storage

-15°C to -25°C/1 year (Do not lower than -25°C)

### Basic Information

Clonality	Monoclonal
-----------	------------

### Immunogen Information

Specificity	Endogenous
-------------	------------

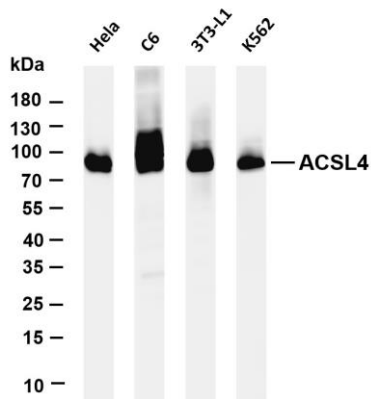
### Target Information

Gene name	ACSL4 ACS4 FACL4 LACS4
Protein Name	ACSL4

Organism	Gene ID	UniProt ID
Human	2182	O60488
Mouse	50790	Q9QUJ7
Rat	113976	O35547

Cellular Localization	Membrane
-----------------------	----------

## Validation Data



Various whole cell lysates were separated by 4-20% SDS-PAGE, and the membrane was blotted with anti-ACSL4 antibody. The HRP conjugated Goat anti-Rabbit IgG(H + L) antibody was used to detect the antibody.

Lane 1: HeLa

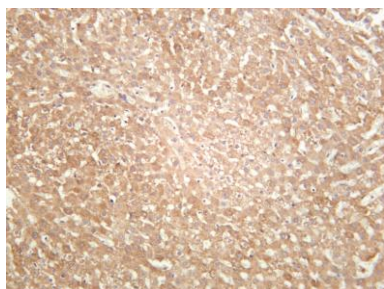
Lane 2: C6

Lane 3: 3T3-L1

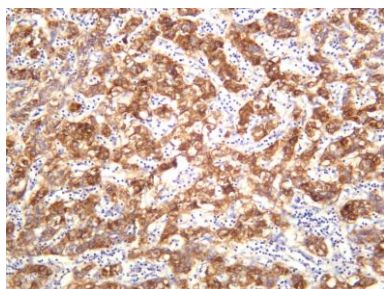
Lane 4: K562

Predicted band size: 79kDa

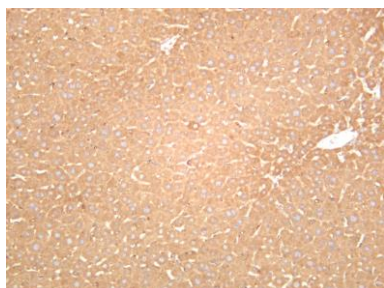
Observed band size: 79kDa



Rat liver was stained with anti-ACSL4 rabbit antibody



Human hepatocellular carcinoma was stained with anti-ACSL4 rabbit antibody



Mouse liver was stained with anti-ACSL4 rabbit antibody

For Research Use Only